

HP2PROFILES®

CATALOGUE
2022



Contents.

Cable Protection	8
Corrugated Conduit	10
HPFLEX® - PVC	12
PPFLEX® - Polypropelene ^{NEW}	22
PEFLEX® - High Density Polyethelene ^{NEW}	24
NYLOFLEX® - Nylon ^{NEW}	26
Conduit Fittings & Accessories	28
Shallow Junction Boxes	30
Deep Junction Boxes	32
Couplings & Reducers	34
Adaptors, Elbows & Tees	36
Other Fittings	38
Sweep Bends	42
Ducting Systems	44
Electrical Ducting	46
Ducting Accessories	48

Enclosures and Accessories	50
Adaptable Enclosures	52
SCABOX Series	54
OMNIA System	56
DOMINO Series	58
Accessories	61
Information	62
Classification Code (acc. to EN 61386.24)	64
Classification Code (acc. to EN 61386.01)	66
Chemical Resistance	67
Corrugated Conduit Comparison Guide	68
Support	70
Contact Us	71

Introduction	Corrugated Conduit
Page	Page
05	10

Conduit Fittings	Ducting Systems	Adaptable Enclosures	Technical Infomation
Page	Page	Page	Page
28	44	52	62



1995 - 2020

Celebrating 25 years
of exceptional quality.

Quality you can trust.



Introduction

Quality you can trust

HP Profiles has been extruding PVC Conduit since 1995. Our raw materials have been specially formulated to ensure strict quality control during the production process and integrity after installation.

HPFLEX® electrical corrugated conduit is proven and recognised in the Electrical Industry for its benchmark quality and ability to withstand the harsh Australian environment.

Continuous investment in machinery and tooling, production and distribution facilities and research into innovative products has contributed to our market-leading position in the Australian Electrical Industry. Coupled with our genuine commitment to providing excellent service and accessible support for all our customers, HP Profiles continues to set the standard in both quality and service.

HP Profiles places a strong emphasis on Australian made production, with 100% of our corrugated conduit and electrical ducting proudly manufactured locally in Australia.

Over the past few years, we have taken bold steps against conventional overseas manufacturing and have started to produce all our PVC fittings locally in Australia.

Our goal is to achieve 100% local production of all the products we manufacture and supply by the end of 2023.

We look forward to reaching our target and ensuring we continue to produce the highest quality Australian made products whilst consistently providing the best possible service to the Australian Electrical Industry.

25 Years of Business in the Electrical Industry.

HP Profiles was founded in 1995 with a small manufacturing facility in Perth, originally producing tile trimmings and other various extruded products.

In 2010 HP Profiles expanded operations to Melbourne by relocating all manufacturing to Dandenong whilst still retaining the Perth facility for local distribution. This resulted in reduced lead times for our customers in NSW, Victoria, and Queensland. Since then, HP Profiles has grown into the prominent National business it is today, servicing customers Australia-wide.

With our main manufacturing facility in Victoria, we have also expanded to Brisbane, allowing us to provide prompt service and support to Queensland customers.

HP Profiles now manufactures products for all electrical projects be it big or small, residential or commercial requirements, up to and including large solar farms or government infrastructure projects.

In line with our continuous commitment to market-leading innovation, we are the only manufacturer able to supply PVC Electrical Corrugated Conduit with diameters of 63mm up to 150mm.

AUSTRALIAN MADE

CABLE PROTECTION



Cable Protection

01

10	Corrugated Conduit
28	Conduit Fittings & Accessories
44	Ducting Systems

Corrugated Conduit

HPFLEX®

Pliable uPVC

Medium Duty
Heavy Duty
Solar
Communications
Corrugated Joiner ^{NEW}

PPFLEX®

Flexible Polypropylene

PEFLEX®








Flexible High-density Polyethylene

NYLOFLEX®

Flexible Nylon

Corrugated Conduit Range Comparison Guide

See Page 70 for a more detailed comparison guide

	   			
Properties	HPFLEX®	PEFLEX®	PPFLEX®	NYLOFLEX®
Material	uPVC	HDPE	PP	Nylon
Flammability UL94	V0	HB on request	V2 on request	V0
Compression Strength	750 N, 1250 N, 2100 N	450N ¹	450N ¹	450N
Impact Resistance	2J to 40J	2J ¹	2J ¹	2J ¹
UV Resistance	Extreme UV (T)	2% Carbon Black	2% Carbon Black	UV Stabilised
Colour	Orange - Grey - Black - White	Black	Black	Black
B.E.P Certified	Yes	-	-	-
Halogen Free	-	Yes	Yes	Yes
Applications				
Fixed solar systems	Solar HDT Only	Yes	Yes	Yes
Solar tracking systems	-	Yes	Yes	Yes
Underground	Heavy Duty Only	-	-	-

1. Not applicable to split corrugated conduit.

uPVC	Unplasticised polyvinyl chloride
HDPE	High-density polyethylene
PP	Polypropylene
Nylon	Nylon (PA-6)



HPFLEX® MEDIUM DUTY

Pliable Electrical Corrugated Conduit - uPVC



25 YEAR
LIMITED
WARRANTY*



HPFLEX® Medium Duty electrical corrugated conduit is manufactured in Australia to the Australian standards with a 25-Year limited warranty*. Our Medium duty is light grey in colour with outstanding UV protection from Australia's harsh sun with extreme UV resistance.

Unplasticised PVC is a cost-effective polymer with high resistance to impact, water, weather, chemicals and corrosive environments.

Our PVC corrugated conduit is manufactured from B.E.P Certified material and conforms to AS/NZS2053.5:2001.



MANUFACTURED
IN AUSTRALIA



B.E.P CERTIFIED



750N
COMPRESSION
STRENGTH



6J IMPACT
RESISTANCE



EXTREME UV (T)
STABILISATION

PROPERTIES

Material	uPVC
Rated Duty	Medium-Duty
Colour	Light Grey RAL 7035
B.E.P Certified	Yes
Flame Resistance	Non-flame propagating (UL94-V0)
Lead Free	Yes
Dielectric Strength	10 - 40 kV/mm
Halogen Free	No
Ageing Resistance	> 25 years
Rodent repellent	Not attractive to rodents
Country of Manufacture	Australia

SPECIFICATIONS

Compression Strength	750 N
Impact Resistance	2J
UV Resistance	Extreme UV (T)
Minimum Working Temperature	-5°C
Maximum Working Temperature	+60°C
Resistance to Bending	Pliable

STANDARDS

Ø20 to Ø63	AS/NZS 2053.5:2001
------------	--------------------

Product Codes and Dimensions

NOMINAL DIAMETER	PART NUMBER	DESCRIPTION
Ø20	HPPCM2010	HPFLEX® Medium-Duty Electrical Corrugated Conduit Roll 20mm x 10m
	HPPCM2020	HPFLEX® Medium-Duty Electrical Corrugated Conduit Roll 20mm x 20m
	HPPCM2050	HPFLEX® Medium-Duty Electrical Corrugated Conduit Roll 20mm x 50m
Ø25	HPPCM2510	HPFLEX® Medium-Duty Electrical Corrugated Conduit Roll 25mm x 10m
	HPPCM2520	HPFLEX® Medium-Duty Electrical Corrugated Conduit Roll 25mm x 20m
	HPPCM2550	HPFLEX® Medium-Duty Electrical Corrugated Conduit Roll 25mm x 50m
Ø32	HPPCM3210	HPFLEX® Medium-Duty Electrical Corrugated Conduit Roll 32mm x 10m
	HPPCM3225	HPFLEX® Medium-Duty Electrical Corrugated Conduit Roll 32mm x 25m
Ø40	HPPCM4010	HPFLEX® Medium-Duty Electrical Corrugated Conduit Roll 40mm x 10m
	HPPCM4025	HPFLEX® Medium-Duty Electrical Corrugated Conduit Roll 40mm x 25m
Ø50	HPPCM5010	HPFLEX® Medium-Duty Electrical Corrugated Conduit Roll 50mm x 10m
	HPPCM5025	HPFLEX® Medium-Duty Electrical Corrugated Conduit Roll 50mm x 25m
Ø63	HPPCM6310	HPFLEX® Medium-Duty Electrical Corrugated Conduit Roll 63mm x 10m

Ø80 is available as Heavy-Duty grey, see page 14.

NOMINAL (mm)	OUTER DIAMETER (mm)	INNER DIAMETER (mm)	WORKING BENDING RADIUS (mm)	STD COIL LENGTH (m)
Ø20	20 (±0.3)	14 (±0.3)	120	10, 20, 50
Ø25	25 (±0.4)	18.2 (±0.4)	150	10, 20, 50
Ø32	32 (±0.4)	23.8 (±0.4)	192	10, 25
Ø40	40 (±0.4)	32.6 (±0.4)	240	10, 25
Ø50	50 (±0.5)	41 (±0.5)	300	10,25
Ø63	63 (±0.6)	52 (±0.6)	378	10

Our conduits are available in custom coil lengths on request.

Ideal uses

Protection of above-ground electrical cables and installations.

Compatible with

Our PVC Fittings Range pg. 28

*HP Profiles' liability diminishes over the term of the warranty.

Product information and relevant documents are subject to change. We reserve the right to change material specifications without notice.

Specifications listed are not limited and may extend past the scope of this document.

Dimensions given are approximate as shrinkage can occur after production. 25-year warranty is subject to terms & conditions, contact us or go to www.hpprofiles.com/warranty for full T&C's.

HPFLEX® HEAVY DUTY

Pliable Electrical Corrugated Conduit - uPVC



25 YEAR
LIMITED
WARRANTY*



HPFLEX® Heavy Duty corrugated conduit is manufactured in Australia to the highest standards with a 25-Year warranty*.

Our conduit conforms to AS/NZS2053.5:2001 and is manufactured with B.E.P certified material. **HPFLEX®** is available from 16mm to 63mm (external diameter) and 80mm (internal diameter).

Unplasticised PVC is a cost-effective polymer with high resistance to impact, water, weather, chemicals and corrosive environments.

Due to its orange colour and high compression strength, **HPFLEX®** Heavy duty is ideal for underground electrical installations requiring the concealment and protection of electrical cables. Our heavy-duty is also UV stabilised to ensure strength and stability if subject to Australia's harsh UV rays.



MANUFACTURED
IN AUSTRALIA



B.E.P CERTIFIED



1250N
COMPRESSION
STRENGTH



6J IMPACT
RESISTANCE



EXTREME UV (T)
STABILISATION

PROPERTIES

Material	uPVC
Rated Duty	Heavy-duty
Colour	Orange RAL 2012
B.E.P Certified	Yes
Flame Resistance	Non-flame propagating (UL94-V0)
Lead Free	Yes
Dielectric Strength	10 - 40 kV/mm
Halogen Free	No
Ageing Resistance	> 25 years
Rodent repellent	Not attractive to rodents
Country of Manufacture	Australia

SPECIFICATIONS

Compression Strength	1250 N
Impact Resistance	6J
UV Resistance	Extreme UV (T)
Minimum Working Temperature	-5°C
Maximum Working Temperature	+60°C
Resistance to Bending	Pliable

STANDARDS

Ø20 to Ø63	AS/NZS 2053.5:2001
Ø80	IEC 61386.22: 4.4.2.1.2.2

Product Codes and Dimensions

NOMINAL DIAMETER	PART NUMBER	DESCRIPTION
Ø20	HPPCH2010	HPFLEX® Heavy-Duty Electrical Corrugated Conduit Roll 20mm x 10m
	HPPCH2020	HPFLEX® Heavy-Duty Electrical Corrugated Conduit Roll 20mm x 20m
	HPPCH2050	HPFLEX® Heavy-Duty Electrical Corrugated Conduit Roll 20mm x 50m
Ø25	HPPCH2510	HPFLEX® Heavy-Duty Electrical Corrugated Conduit Roll 25mm x 10m
	HPPCH2520	HPFLEX® Heavy-Duty Electrical Corrugated Conduit Roll 25mm x 20m
	HPPCH2550	HPFLEX® Heavy-Duty Electrical Corrugated Conduit Roll 25mm x 50m
Ø32	HPPCH3210	HPFLEX® Heavy-Duty Electrical Corrugated Conduit Roll 32mm x 10m
	HPPCH3225	HPFLEX® Heavy-Duty Electrical Corrugated Conduit Roll 32mm x 25m
Ø40	HPPCH4010	HPFLEX® Heavy-Duty Electrical Corrugated Conduit Roll 40mm x 10m
	HPPCH4025	HPFLEX® Heavy-Duty Electrical Corrugated Conduit Roll 40mm x 25m
Ø50	HPPCH5010	HPFLEX® Heavy-Duty Electrical Corrugated Conduit Roll 50mm x 10m
	HPPCH5025	HPFLEX® Heavy-Duty Electrical Corrugated Conduit Roll 50mm x 25m
Ø63	HPPCH6310	HPFLEX® Heavy-Duty Electrical Corrugated Conduit Roll 63mm x 10m
Ø80 ¹	HPPCH8010	HPFLEX® Heavy-Duty Electrical Corrugated Conduit Roll 80mm x 10m
	HPPCH8010G	HPFLEX® Heavy-Duty Electrical Corrugated Conduit Roll 80mm x 10m - Grey
	HPPCH8010W	HPFLEX® Heavy-Duty Electrical Corrugated Conduit Roll 80mm x 10m - White

1. Nominal diameter is measured from inner diameter (I.D) as per IEC 61386.22

NOMINAL (mm)	OUTER DIAMETER (mm)	INNER DIAMETER (mm)	WORKING BENDING RADIUS (mm)	STD COIL LENGTH (m)
Ø20	20 (±0.3)	14 (±0.3)	120	10, 20, 50
Ø25	25 (±0.4)	18.2 (±0.4)	150	10, 20, 50
Ø32	32 (±0.4)	23.8 (±0.4)	192	10, 25
Ø40	40 (±0.4)	32.6 (±0.4)	240	10, 25
Ø50	50 (±0.5)	41 (±0.5)	300	10,25
Ø63	63 (±0.6)	52 (±0.6)	378	10
Ø80	96 (±0.9)	79 (±0.9)	480	10

Our conduits are available in custom coil lengths on request.

Ideal uses

Protection of underground electrical cables and installations.

Compatible with

Our PVC Fittings Range pg. 28

100mm & 150mm Corrugated Conduit is also available as our HPFLEX® Corrugated Joiner.
Page 21

*HP Profiles' liability diminishes over the term of the warranty.

Product information and relevant documents are subject to change. We reserve the right to change material specifications without notice.

Specifications listed are not limited and may extend past the scope of this document.

Dimensions given are approximate as shrinkage can occur after production. 25-year warranty is subject to terms & conditions, contact us or go to www.hpprofiles.com/warranty for full T&C's.

HPFLEX® SOLAR HEAVY DUTY

Pliable Electrical Solar Corrugated Conduit - uPVC



MANUFACTURED
IN AUSTRALIA



B.E.P CERTIFIED



1250N
COMPRESSION
STRENGTH



6J IMPACT
RESISTANCE



EXTREME UV (T)
STABILISATION

HPFLEX® Solar is our corrugated conduit designed for solar installations. Manufactured in Australia with extreme UV stabilisation. with a 25-Year limited warranty*.

Unplasticised PVC is a cost-effective polymer with high resistance to impact, water, weather, chemicals and corrosive environments.

Our conduit conforms to AS/NZS 2053.5-2001 and is manufactured from B.E.P certified uPVC. **HPFLEX®** Solar is suitable for residential or commercial PV installations where protection and concealment of electrical cables from a PV solar system is required.

PROPERTIES	
Material	uPVC
Rated Duty	Heavy-duty
Colour	Light Grey RAL 7035 Black RAL 9011
B.E.P Certified	Yes
Flame Resistance	Non-flame propagating (UL94-V0)
Lead Free	Yes
Dielectric Strength	10 - 40 kV/mm
Halogen Free	No
Ageing Resistance	> 25 years
Rodent repellent	Not attractive to rodents
Country of Manufacture	Australia
SPECIFICATIONS	
Compression Strength	1250 N
Impact Resistance	6J
UV Resistance	Extreme UV (T)
Minimum Working Temperature	-5°C
Maximum Working Temperature	+60°C
Resistance to Bending	Pliable
STANDARDS	
Ø20 to Ø63	AS/NZS 2053.5:2001 AS/NZS 5033:2012

Product Codes and Dimensions

Grey

TYPE	PART NUMBER	DESCRIPTION
Ø25	HPPSOLARHDT2550	HPFLEX® Solar H/Duty Electrical Corrugated Conduit Roll 25mm x 50m - Grey
Ø32	HPPSOLARHDT3225	HPFLEX® Solar H/Duty Electrical Corrugated Conduit Roll 32mm x 25m - Grey
Ø40	HPPSOLARHDT4025	HPFLEX® Solar H/Duty Electrical Corrugated Conduit Roll 40mm x 25m - Grey
Ø50	HPPSOLARHDT5025	HPFLEX® Solar H/Duty Electrical Corrugated Conduit Roll 50mm x 25m - Grey
Ø63	HPPSOLARHDT6310	HPFLEX® Solar H/Duty Electrical Corrugated Conduit Roll 63mm x 10m - Grey

Black

TYPE	PART NUMBER	DESCRIPTION
Ø25	HPPSOLARBLKHDT2550	HPFLEX® Solar H/Duty Electrical Corrugated Conduit Roll 25mm x 50m - Black
Ø32	HPPSOLARBLKHDT3225	HPFLEX® Solar H/Duty Electrical Corrugated Conduit Roll 32mm x 25m - Black
Ø40	HPPSOLARBLKHDT4025	HPFLEX® Solar H/Duty Electrical Corrugated Conduit Roll 40mm x 25m - Black
Ø50	HPPSOLARBLKHDT5025	HPFLEX® Solar H/Duty Electrical Corrugated Conduit Roll 50mm x 25m - Black

NOMINAL (mm)	OUTER DIAMETER (mm)	INNER DIAMETER (mm)	WORKING BENDING RADIUS (mm)	STD COIL LENGTH (m)
Ø25	25 (±0.4)	18.2 (±0.4)	150	10, 20, 50
Ø32	32 (±0.4)	23.8 (±0.4)	192	10, 25
Ø40	40 (±0.4)	32.6 (±0.4)	240	10, 25
Ø50	50 (±0.5)	41 (±0.5)	300	10,25
Ø63	63 (±0.6)	52 (±0.6)	378	10

Our conduits are available in custom coil lengths on request.

Ideal uses

Static Commercial or Residential PV Installations

Compatible with

Our PVC Fittings range pg. 28

Other Versions



HPFLEX® SOLAR BLACK

*HP Profiles' liability diminishes over the term of the warranty.

Product information and relevant documents are subject to change. We reserve the right to change material specifications without notice.

Specifications listed are not limited and may extend past the scope of this document.

Dimensions given are approximate as shrinkage can occur after production. 25-year warranty is subject to terms & conditions, contact us or go to www.hpprofiles.com/warranty for full T&C's.

HPFLEX® COMMUNICATIONS

Pliable Electrical Corrugated Conduit - uPVC



25 YEAR
LIMITED
WARRANTY*



HPFLEX® Communications Corrugated Conduit is manufactured in Australia to the highest standards with a 25-Year limited warranty*.

Our conduit conforms to AS/NZS 2053.5-2001 and is manufactured from B.E.P certified uPVC. Unplasticised PVC is a cost-effective polymer with high resistance to impact, water, weather, chemicals and corrosive environments.

HPFLEX® Communications is suitable for residential or commercial installations where protection and concealment of electrical data cables is required.



MANUFACTURED
IN AUSTRALIA



B.E.P CERTIFIED



750N
COMPRESSION
STRENGTH



2J IMPACT
RESISTANCE



EXTREME UV (T)
STABILISATION

PROPERTIES

Material	uPVC
Rated Duty	Medium-duty
Colour	White RAL 9003
B.E.P Certified	Yes
Flame Resistance	Non-flame propagating (UL94-V0)
Lead Free	Yes
Dielectric Strength	10 - 40 kV/mm
Halogen Free	No
Ageing Resistance	> 25 years
Rodent repellent	Not attractive to rodents
Country of Manufacture	Australia

SPECIFICATIONS

Compression Strength	750 N
Impact Resistance	2J
UV Resistance	Extreme UV (T)
Minimum Working Temperature	-5°C
Maximum Working Temperature	+60°C
Resistance to Bending	Pliable

STANDARDS

Ø20 to Ø50	AS/NZS 2053.5:2001
------------	--------------------

Product Codes and Dimensions

TYPE	PART NUMBER	DESCRIPTION
Ø20	HPPCMC2020	HPFLEX® M/Duty Communications Corrugated Conduit Roll 20mm x 20m
	HPPCMC2050	HPFLEX® M/Duty Communications Corrugated Conduit Roll 20mm x 50m
Ø25	HPPCMC2520	HPFLEX® M/Duty Communications Corrugated Conduit Roll 25mm x 20m
	HPPCMC2550	HPFLEX® M/Duty Communications Corrugated Conduit Roll 25mm x 50m
Ø32	HPPCMC3225	HPFLEX® M/Duty Communications Corrugated Conduit Roll 32mm x 25m
Ø50	HPPCMC5010	HPFLEX® M/Duty Communications Corrugated Conduit Roll 50mm x 10m

Ø80 is available as heavy-duty white, see page 14.

NOMINAL (mm)	OUTER DIAMETER (mm)	INNER DIAMETER (mm)	WORKING BENDING RADIUS (mm)	STD COIL LENGTH (m)
Ø20	20 (±0.3)	14 (±0.3)	120	20, 50
Ø25	25 (±0.4)	18.2 (±0.4)	150	20, 50
Ø32	32 (±0.4)	23.8 (±0.4)	192	25
Ø50	50 (±0.5)	41 (±0.5)	300	10

Alternative diameters and coil lengths are available on request.

Ideal uses

Data or communications installations requiring the protection and concealment of cables.

Compatible with

Our PVC Fittings range pg. 28

*HP Profiles' liability diminishes over the term of the warranty.

Product information and relevant documents are subject to change. We reserve the right to change material specifications without notice.

Specifications listed are not limited and may extend past the scope of this document.

Dimensions given are approximate as shrinkage can occur after production. 25-year warranty is subject to terms & conditions, contact us or go to www.hpprofiles.com/warranty for full T&C's.

HPFLEX® CORRUGATED JOINER

Pliable Electrical Corrugated Joiner with Dual Spigots - uPVC



MANUFACTURED
IN AUSTRALIA



B.E.P CERTIFIED



2100N
COMPRESSION
STRENGTH



28J & 40J
IMPACT
RESISTANCE



EXTREME UV (T)
STABILISATION



REGISTERED
DESIGN
201917034

HPFLEX® Corrugated Joiner is our new and exclusive product to HP Profiles. Manufactured in Australia with B.E.P certified material, our corrugated joiner is an innovative alternative to conduit bends, building connections, and other installations requiring increased flexibility. Spigots are incorporated in the design allowing for easy installation into existing rigid conduit bells.

The Corrugated Joiner can be installed indoors, outdoors, buried underground or embedded in concrete. It's UV stabilised and can withstand up to 2100N compression. Unplasticised PVC is a cost-effective polymer with high resistance to impact, water, weather, chemicals and corrosive environments.

PROPERTIES

Material	uPVC
Rated Duty	Heavy-duty
Colour	Orange RAL 2012 White RAL 9003
B.E.P Certified	Yes
Flame Resistance	Non-flame propagating (UL94-V0)
Lead Free	Yes
Dielectric Strength	10 - 40 kV/mm
Halogen Free	No
Ageing Resistance	> 25 years
Rodent repellent	Not attractive to rodents
Country of Manufacture	Australia

SPECIFICATIONS

Compression Strength	2100 N
Impact Resistance	Ø100 - 28J Ø150 - 40J
UV Resistance	Extreme UV (T)
Minimum Working Temperature	-5°C
Maximum Working Temperature	+60°C
Resistance to Bending	Pliable
Working Bending Radius	Ø100 - 500mm Ø150 - 720mm

STANDARDS

Ø100 & Ø150	IEC 61386-22 IEC 61386-24 Type N750
-------------	--

*HP Profiles' liability diminishes over the term of the warranty.

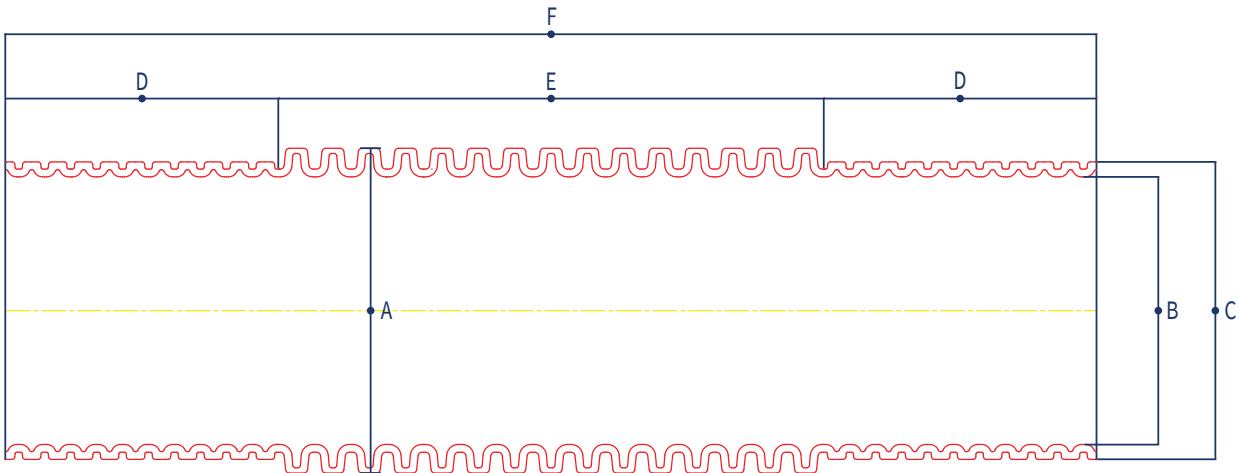
Product information and relevant documents are subject to change. We reserve the right to change material specifications without notice.

Specifications listed are not limited and may extend past the scope of this document.

Dimensions given are approximate as shrinkage can occur after production. 25-year warranty is subject to terms & conditions, contact us or go to www.hpprofiles.com/warranty for full T&C's.

Drawing and Dimensions

Corrugated Joiner Technical Drawing



Registered Design 201917034

TYPE	A OUTER DIAMETER	B MINIMUM INNER DIAMETER	C SPIGOT O.D	D SPIGOT LENGTH	E CORRUGATED LENGTH	F TOTAL LENGTH
Ø100 - 2.1m	125mm (+0, -1.2mm)	100.3mm	114.5mm ¹	105mm	1890mm	2100mm ³
Ø150 - 2.1m	180mm (+0,-1.8mm)	140.9mm	160.3mm ²	105mm	1820mm	2030mm ³

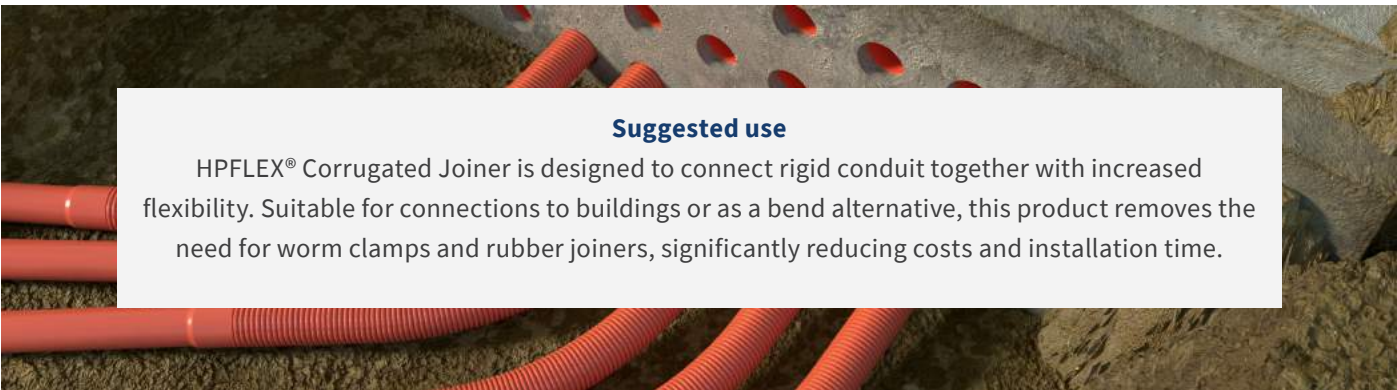
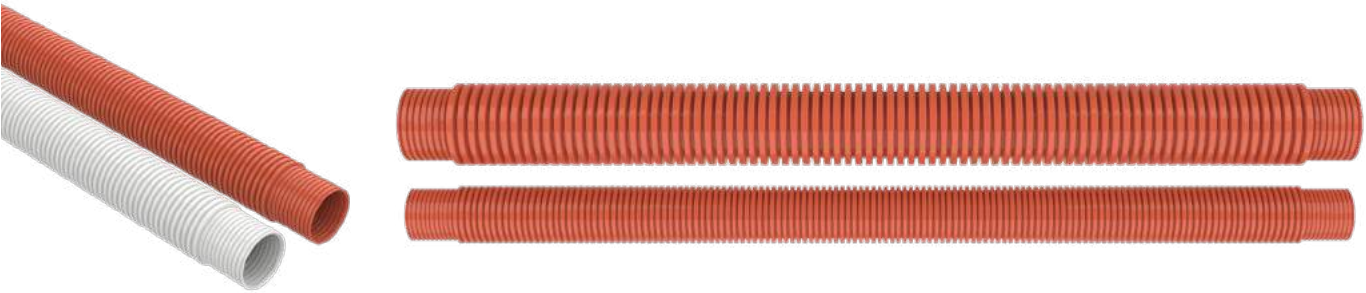
¹ Ø100 spigot outer diameter fits into a standard 100mm rigid conduit bell.

² Ø150 spigot outer diameter fits into a standard 150mm rigid conduit bell.

³ Dimensions are approximate as shrinkage can occur during production.

NOMINAL (mm)	PART NUMBER	DESCRIPTION
Ø100	HPPCJ100	HPFLEX® Heavy Duty Electrical Corrugated Joiner 100mm x 2.1m - Orange
	HPPCJ100W	HPFLEX® Heavy Duty Electrical Corrugated Joiner 100mm x 2.1m White
Ø150	HPPCJ150	HPFLEX® Heavy Duty Electrical Corrugated Joiner 150mm x 2.1m Orange
	HPPCJ150W	HPFLEX® Heavy Duty Electrical Corrugated Joiner 150mm x 2.1m White

Additional Images



Suggested use

HPFLEX® Corrugated Joiner is designed to connect rigid conduit together with increased flexibility. Suitable for connections to buildings or as a bend alternative, this product removes the need for worm clamps and rubber joiners, significantly reducing costs and installation time.

PPFLEX®

Flexible Corrugated Conduit - Polypropylene



PPFLEX® is our polypropylene electrical corrugated conduit made locally in Australia.

Polypropylene (PP) is a tough thermoplastic with anti-oxidant and UV stabilisation. Polypropylene exhibits an excellent balance of properties including high impact strength, better stress crack resistance and high toughness. Polypropylene has excellent resistance to diluted and concentrated acids, alcohols and bases.

Our **PPFLEX®** is available in split, allowing for easy application to pre-installed cables.

PPFLEX® is a made-to-order product with limited stock availability.

PROPERTIES	Non-Split	Split
Material	Polypropelene	Polypropelene
Rated Duty	Available on Request	-
Colour	Black RAL 9011	Black RAL 9011
B.E.P Certified	-	-
Flame Resistance	UL94-V2 on request	UL94-V2 on request
Lead Free	Yes	Yes
Dielectric Strength	20 - 28 kV/mm	20 - 28 kV/mm
Halogen Free	Yes	Yes
UV Ageing Resistance	> 10 years	> 10 years
Rodent repellent	Not attractive to rodents	Not attractive to rodents
Country of Manufacture	Australia	Australia

SPECIFICATIONS		
Compression Strength	450N to 1250N Available on Request	-
Impact Resistance	2J	-
UV Resistance	2% Carbon Black	2% Carbon Black
Minimum Working Temperature	-10°C	-10°C
Maximum Working Temperature	+65°C	+65°C
Resistance to Bending	Flexible	Flexible

Product Codes and Dimensions

Non-Split

TYPE	PART NUMBER	DESCRIPTION
Ø25	HPP-PP2510	PPFLEX® Polypropylene Electrical Corrugated Conduit Roll 25mm x 10m
	HPP-PP2520	PPFLEX® Polypropylene Electrical Corrugated Conduit Roll 25mm x 20m
	HPP-PP2550	PPFLEX® Polypropylene Electrical Corrugated Conduit Roll 25mm x 50m
Ø32	HPP-PP3210	PPFLEX® Polypropylene Electrical Corrugated Conduit Roll 32mm x 10m
	HPP-PP3225	PPFLEX® Polypropylene Electrical Corrugated Conduit Roll 32mm x 25m
Ø40	HPP-PP4010	PPFLEX® Polypropylene Electrical Corrugated Conduit Roll 40mm x 10m
	HPP-PP4025	PPFLEX® Polypropylene Electrical Corrugated Conduit Roll 40mm x 25m
Ø50	HPP-PP5010	PPFLEX® Polypropylene Electrical Corrugated Conduit Roll 50mm x 10m
	HPP-PP5025	PPFLEX® Polypropylene Electrical Corrugated Conduit Roll 50mm x 25m

Split

TYPE	PART NUMBER	DESCRIPTION
Ø25	HPP-PP2510S	PPFLEX® Split Polypropylene Electrical Corrugated Conduit Roll 25mm x 10m
	HPP-PP2520S	PPFLEX® Split Polypropylene Electrical Corrugated Conduit Roll 25mm x 20m
	HPP-PP2550S	PPFLEX® Split Polypropylene Electrical Corrugated Conduit Roll 25mm x 50m
Ø32	HPP-PP3210S	PPFLEX® Split Polypropylene Electrical Corrugated Conduit Roll 32mm x 10m
	HPP-PP3225S	PPFLEX® Split Polypropylene Electrical Corrugated Conduit Roll 32mm x 25m
Ø40	HPP-PP4010S	PPFLEX® Split Polypropylene Electrical Corrugated Conduit Roll 40mm x 10m
	HPP-PP4025S	PPFLEX® Split Polypropylene Electrical Corrugated Conduit Roll 40mm x 25m
Ø50	HPP-PP5010S	PPFLEX® Split Polypropylene Electrical Corrugated Conduit Roll 50mm x 10m
	HPP-PP5025S	PPFLEX® Split Polypropylene Electrical Corrugated Conduit Roll 50mm x 25m

TYPE (NOMINAL)	OUTER DIAMETER (mm)	INNER DIAMETER (mm)	STD COIL LENGTH (m)
Ø25	25 (+0, -0.4)	16.5	10, 20, 50
Ø32	32 (+0, -0.4)	22	10, 25
Ø40	40 (+0, -0.4)	32	10, 25
Ø50	50 (+0, -0.5)	36	10,25

Alternative diameters and coil lengths are available on request.

Ideal uses

PPFLEX® Corrugated conduit is ideal for general electrical work requiring the concealment and protection of electrical cables. Due to its black colour it is suitable for above ground installations where a reduction of visibility is desired from the installer or customer.

PEFLEX®

Flexible Electrical Corrugated Conduit - High-density Polyethylene



PEFLEX® is our High-density polyethylene electrical corrugated conduit. Made in Australia and available in split for easy installation on pre-installed cables.

- Light in weight and easy to handle compared to other materials.
- High impact strength
- Good resistance to low temperatures
- Good chemical resistance and impervious to water

***PEFLEX®** is a made-to-order product with limited stock availability.*



**MANUFACTURED
IN AUSTRALIA**



**450N TO 1250N
AVAILABLE ON
REQUEST**



**2J IMPACT
RESISTANCE**



UV STABILISED

PROPERTIES	Non-Split	Split
Material	High-density Polyethylene	High-density Polyethylene
Rated Duty	-	-
Colour	Black RAL 9011	Black RAL 9011
B.E.P Certified	-	-
Flame Resistance	UL94-HB on request	UL94-HB on request
Lead Free	Yes	Yes
Dielectric Strength	17 - 24 kV/mm	17 - 24 kV/mm
Halogen Free	Yes	Yes
UV Ageing Resistance	> 10 years	> 10 years
Rodent repellent	Not attractive to rodents	Not attractive to rodents
Country of Manufacture	Australia	Australia
SPECIFICATIONS		
Compression Strength	450N to 1250N Available on Request	-
Impact Resistance	2J	-
UV Resistance	2% Carbon Black	2% Carbon Black
Minimum Temperature	-50°C	-50°C
Maximum Temperature	+70°C	+70°C
Resistance to Bending	Flexible	Flexible

Product Codes and Dimensions

Non-Split

TYPE	PART NUMBER	DESCRIPTION
Ø25	HPP-PE2510	PEFLEX® High-density Polyethylene Electrical Corrugated Conduit Roll 25mm x 10m
	HPP-PE2520	PEFLEX® High-density Polyethylene Electrical Corrugated Conduit Roll 25mm x 20m
	HPP-PE2550	PEFLEX® High-density Polyethylene Electrical Corrugated Conduit Roll 25mm x 50m
Ø32	HPP-PE3210	PEFLEX® High-density Polyethylene Electrical Corrugated Conduit Roll 32mm x 10m
	HPP-PE3225	PEFLEX® High-density Polyethylene Electrical Corrugated Conduit Roll 32mm x 25m
Ø40	HPP-PE4010	PEFLEX® High-density Polyethylene Electrical Corrugated Conduit Roll 40mm x 10m
	HPP-PE4025	PEFLEX® High-density Polyethylene Electrical Corrugated Conduit Roll 40mm x 25m
Ø50	HPP-PE5010	PEFLEX® High-density Polyethylene Electrical Corrugated Conduit Roll 50mm x 10m
	HPP-PE5025	PEFLEX® High-density Polyethylene Electrical Corrugated Conduit Roll 50mm x 25m

Split

TYPE	PART NUMBER	DESCRIPTION
Ø25	HPP-PE2510S	PEFLEX® High-density Polyethylene Electrical Corrugated Conduit Roll 25mm x 10m
	HPP-PE2520S	PEFLEX® High-density Polyethylene Electrical Corrugated Conduit Roll 25mm x 20m
	HPP-PE2550S	PEFLEX® High-density Polyethylene Electrical Corrugated Conduit Roll 25mm x 50m
Ø32	HPP-PE3210S	PEFLEX® High-density Polyethylene Electrical Corrugated Conduit Roll 32mm x 10m
	HPP-PE3225S	PEFLEX® High-density Polyethylene Electrical Corrugated Conduit Roll 32mm x 25m
Ø40	HPP-PE4010S	PEFLEX® High-density Polyethylene Electrical Corrugated Conduit Roll 40mm x 10m
	HPP-PE4025S	PEFLEX® High-density Polyethylene Electrical Corrugated Conduit Roll 40mm x 25m
Ø50	HPP-PE5010S	PEFLEX® High-density Polyethylene Electrical Corrugated Conduit Roll 50mm x 10m
	HPP-PE5025S	PEFLEX® High-density Polyethylene Electrical Corrugated Conduit Roll 50mm x 25m

TYPE (NOMINAL)	OUTER DIAMETER (mm)	INNER DIAMETER (mm)	STD COIL LENGTH (m)
Ø25	25 (+0, -0.4)	16.5	10, 20, 50
Ø32	32 (+0, -0.4)	22	10, 25
Ø40	40 (+0, -0.4)	28.3	10, 25
Ø50	50 (+0, -0.5)	36	10,25

Alternative diameters and coil lengths are available on request.

Ideal uses

PEFLEX® Split is ideal for the concealment and protection of pre-installed electrical cables. Due to its black colour it is suitable for above ground installations where a reduction of visibility is desired from the installer or customer.

Product information and relevant documents are subject to change. We reserve the right to change material specifications without notice. Specifications listed are not limited and may extend past the scope of this document. Dimensions given are approximate as shrinkage can occur after production.

NYLOFLEX®

Flexible Corrugated Conduit - Nylon (PA-6)



NYLOFLEX® is our PA-6 electrical corrugated conduit ideal for electrical installations requiring halogen-free, high strength, high temperature resistance cable protection. Polyamides such as PA-6 exhibit high temperature and electrical resistance. Thanks to their crystalline structure they also show excellent chemical resistance. PA-6 has superb mechanical and barrier properties.

- Good impact strength, even at low temperature
- Excellent fuel and oil resistance
- Good fatigue resistance
- High strength and stiffness at high temperatures

***NYLOFLEX®** is a made-to-order product with limited stock availability.*

PROPERTIES	Non-Split	Split
Material	Nylon (PA-6)	Nylon (PA-6)
Rated Duty	-	-
Colour	Black RAL 9011	Black RAL 9011
B.E.P Certified	-	-
Flame Resistance	UL94-V0	UL94-V0
Lead Free	Yes	Yes
Dielectric Strength	10 - 20 kV/mm	10 - 20 kV/mm
Halogen Free	Yes	Yes
Ageing Resistance	> 25 years	> 25 years
Country of Manufacture	Australia	Australia
SPECIFICATIONS		
Compression Strength	450 N	-
Impact Resistance	2J	-
UV Resistance	UV Stabilised	UV Stabilised
Minimum Temperature	-20°C	-20°C
Maximum Temperature	+100°C	+100°C
Resistance to Bending	Flexible	Flexible

Product Codes and Dimensions

TYPE (NOMINAL)	PART NUMBER	DESCRIPTION
Ø23	HPPNF2350	NYLOFLEX® Corrugated Conduit Roll 23mm x 50m
Ø29	HPPNF2950	NYLOFLEX® Corrugated Conduit Roll 29mm x 50m
Ø36	HPPNF3630	NYLOFLEX® Corrugated Conduit Roll 36mm x 30m
Ø48	HPPNF4830	NYLOFLEX® Corrugated Conduit Roll 48mm x 30m

NYLOFLEX® codes are merely guide and subject to change. Other dimensions and lengths are available on request.

TYPE (NOMINAL)	OUTER DIAMETER (mm)	INNER DIAMETER (mm)	WORKING BENDING RADIUS (mm)	STD COIL LENGTH (m)
Ø23	28.5 (±0.4)	22.6 (±0.5)	120	50
Ø29	34.5 (±0.4)	29 (±0.4)	150	50
Ø36	42.5 (±0.4)	36.5 (±0.4)	192	25
Ø48	54.5 (±0.4)	48.5 (±0.4)	240	25

Ideal uses

Commercial and Industrial installations requiring a halogen-free polymer with excellent fuel and oil resistance



MANUFACTURED
IN AUSTRALIA



450N/5CM
COMPRESSION
STRENGTH



2J IMPACT
RESISTANCE



UV STABILISED

Product information and relevant documents are subject to change. We reserve the right to change material specifications without notice. Specifications listed are not limited and may extend past the scope of this document. Dimensions given are approximate as shrinkage can occur after production.

Conduit Fittings and Accessories

Shallow Junction Boxes

Deep Junction Boxes

Couplings & Reducers

Adaptors, Elbows & Tees

Other Fittings

Sweep Bends

30

32

34

36

38

42



Quality Australian Made Fittings and Accessories

HP Profiles strives to provide the highest quality products to the Australian market. Over the past few years as our production processes have improved we have been reducing our reliance on imports. We have begun producing our conduit fittings locally at our plant in Dandenong, Victoria. Over time as we discontinue all imported products, we aim to be manufacturing 100% of our products in Australia.

HP Profiles' range of Australian-made PVC Fittings are recommended to be used together with our HPFLEX® range. The UV stabilisation, heavy-duty rating and quality components ensure that no part of an electrical installation faces degeneration over time.

HP Profiles is currently transitioning to the Australian production of PVC fittings. We are unable to guarantee our supply of PVC fittings will be Australian-made. Please refer to the label on your product box for the country of origin.

Heavy-duty and UV stabilisation is only applicable to Australian-made fittings. Please contact us if you need an Australian-made product and to ensure Australian-made fittings are available. 80mm, 100mm, 150mm fittings are to IEC standards and will not fit rigid conduit unless specified.

PROPERTIES		AUSTRALIAN MADE PVC FITTINGS	
Material		uPVC	
Halogen Free		-	
Flammability UL94		V0	
Colour		Silk Grey RAL 7044 or Orange RAL 2009	
B.E.P Certified		Yes	
Screw Properties		Stainless Steel	
SPECIFICATIONS			
UV Resistance		Extreme UV (T)	
Minimum Temperature		-5°C	
Maximum Temperature		+ 60°C	
Dielectric Strength		10 - 40 kV/mm	
uPVC		Unplasticised polyvinyl chloride	
HDPE		high-density polyethylene	
PP		Polypropylene	
Nylon		Nylon (PA-6)	



MANUFACTURED
IN AUSTRALIA*



B.E.P CERTIFIED*



EXTREME UV (T)
STABILISATION*

*HP Profiles is currently transitioning to the Australian production of PVC fittings. We are unable to guarantee our supply of PVC fittings will be Australian made. Please refer to the label on your product box for the country of origin.

Shallow Junction Boxes

Conduit Fittings

HP Profiles' Australian-made junction boxes are B.E.P certified and suitable for internal and external electrical installations. With added UV Stabilisation and stainless steel screws, it's built to withstand Australia's harsh environment.



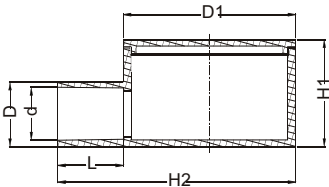
EXTREME UV (T)
STABILISATION*



MANUFACTURED
IN AUSTRALIA*



B.E.P CERTIFIED*



PVC CONDUIT FITTINGS

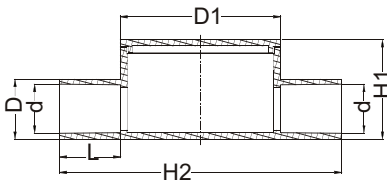
1 - Way Junction Box

Circular Junction Box (mm)

PART NUMBER	TYPE	QTY/BOX	D	d	L	D1	H1	H2	MADE IN AUSTRALIA
HPPJB1-20	Ø20	10	25	20.25	18	65.5	41	80.5	✓*
HPPJB1-25	Ø25	10	29.8	25.25	22	65.5	41	85.5	✓*

Square Junction Box

PART NUMBER	TYPE	QTY/BOX	D	d	L	D1	H1	H2
HPPJB1-32	Ø32	10	36.7	32.25	30.2	76.7	49	106.9



PVC CONDUIT FITTINGS

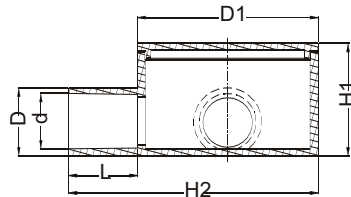
2 - Way Junction Box

Circular Junction Box (mm)

PART NUMBER	TYPE	QTY/BOX	D	d	L	D1	H1	H2	MADE IN AUSTRALIA
HPPJB2-20	Ø20	10	25	20.25	18	65.6	41	95.5	✓*
HPPJB2-25	Ø25	10	29.8	25.25	22	65.6	41	105.5	✓*

Square Junction Box (mm)

PART NUMBER	TYPE	QTY/BOX	D	d	L	D1	H1	H2
HPPJB2-32	Ø32	10	36.7	32.25	30.2	76.7	49	137.1



PVC CONDUIT FITTINGS

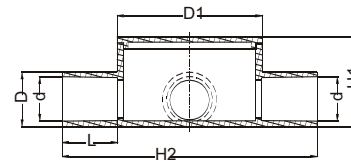
2 - Way Angled Junction Box

Circular Junction Box (mm)

PART NUMBER	TYPE	QTY/BOX	D	d	L	D1	H1	H2	MADE IN AUSTRALIA
HPPJB2A-20	Ø20	10	25	20.25	18	65.6	41	80.5	✓*
HPPJB2A-25	Ø25	10	29.8	25.25	22	65.6	41	85.5	✓*

Square Junction Box (mm)

PART NUMBER	TYPE	QTY/BOX	D	d	L	D1	H1	H2
HPPJB2A-32	Ø32	10	36.7	32.25	30.2	76.7	49	106.9



PVC CONDUIT FITTINGS

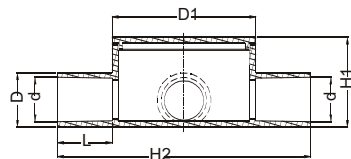
3 - Way Junction Box

Circular Junction Box (mm)

PART NUMBER	TYPE	QTY/BOX	D	d	L	D1	H1	H2	MADE IN AUSTRALIA
HPPJB3-20	Ø20	10	25	20.25	18	65.6	41	95.5	✓*
HPPJB3-25	Ø25	10	29.8	25.25	22	65.6	41	105.5	✓*

Square Junction Box (mm)

PART NUMBER	TYPE	QTY/BOX	D	d	L	D1	H1	H2
HPPJB2A-32	Ø32	10	36.7	32.25	30.2	76.7	49	106.9



PVC CONDUIT FITTINGS

4 - Way Junction Box

Circular Junction Box (mm)

PART NUMBER	TYPE	QTY/BOX	D	d	L	D1	H1	H2	MADE IN AUSTRALIA
HPPJB4-20	Ø20	10	25	20.25	18	65.6	41	95.5	✓*
HPPJB4-25	Ø25	10	29.8	25.25	22	65.6	41	105.5	✓*

Square Junction Box (mm)

PART NUMBER	TYPE	QTY/BOX	D	d	L	D1	H1	H2
HPPJB4-32	Ø32	10	36.7	32.25	30.2	76.7	49	106.9

Deep Junction Boxes

Conduit Fittings

HP Profiles' Australian-made junction boxes are B.E.P certified and suitable for internal and external electrical installations. With added UV Stabilisation and stainless steel screws, it's built to withstand Australia's harsh environment.



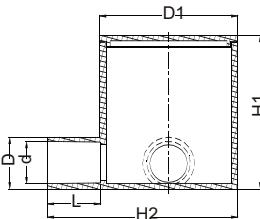
EXTREME UV (T)
STABILISATION*



MANUFACTURED
IN AUSTRALIA*



B.E.P CERTIFIED*

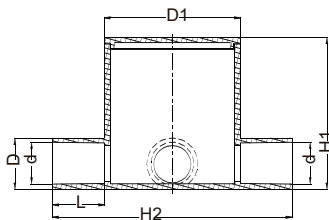


PVC CONDUIT FITTINGS

2 - Way Deep Junction Box

Product Codes and Dimensions (mm)

PART NUMBER	TYPE	QTY/BOX	D	d	L	D1	H1	H2	MADE IN AUSTRALIA
HPPDJB2A-20	Ø20	10	25	20.2	18	65.5	71.3	80.5	✓*
HPPDJB2A-25	Ø25	10	29.8	25.2	22	65.5	71.3	85.5	

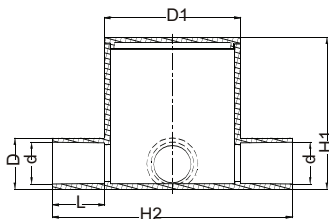


PVC CONDUIT FITTINGS

3 - Way Deep Junction Box

Product Codes and Dimensions (mm)

PART NUMBER	TYPE	QTY/BOX	D	d	L	D1	H1	H2	MADE IN AUSTRALIA
HPPDJB3-20	Ø20	10	25	20.2	18	65.5	71.3	95.5	✓*
HPPDJB3-25	Ø25	10	29.8	25.2	22	65.5	71.3	105.5	✓*

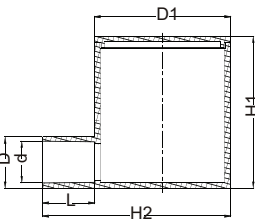


PVC CONDUIT FITTINGS

4 - Way Deep Junction Box

Product Codes and Dimensions (mm)

PART NUMBER	TYPE	QTY/BOX	D	d	L	D1	H1	H2	MADE IN AUSTRALIA
HPPDJB4-20	Ø20	10	25	20.2	18	65.5	71.3	95.5	✓*
HPPDJB4-25	Ø25	10	29.8	25.2	22	65.5	71.3	105.5	✓*

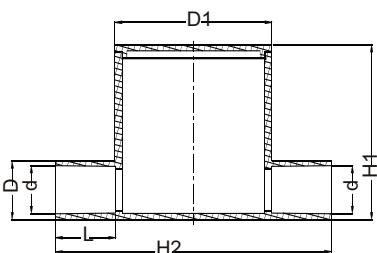


PVC CONDUIT FITTINGS

1 - Way Deep Junction Box

Product Codes and Dimensions (mm)

PART NUMBER	TYPE	QTY/BOX	D	d	L	D1	H1	H2	MADE IN AUSTRALIA
HPPDJB1-20	Ø20	10	25	20.2	18	65.5	71.3	80.5	✓*
HPPDJB1-25	Ø25	10	29.8	25.2	22	65.5	71.3	85.5	✓*



PVC CONDUIT FITTINGS

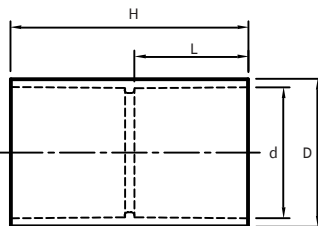
2 - Way Deep Junction Box

Product Codes and Dimensions (mm)

PART NUMBER	TYPE	QTY/BOX	D	d	L	D1	H1	H2	MADE IN AUSTRALIA
HPPDJB2-20	Ø20	10	25	20.2	18	65.5	71.3	95.5	✓*
HPPDJB2-25	Ø25	10	29.8	25.2	22	65.5	71.3	105.5	✓*

Couplings & Reducers

Conduit Fittings



PVC CONDUIT FITTINGS

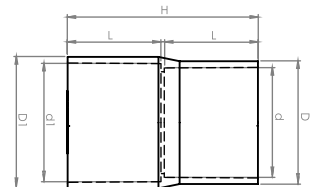
Solid Coupling

Product Codes and Dimensions (mm)

PART NUMBER	TYPE	QTY/BOX	D	d	L	H
HPPSC20	Ø20	50	25	20.4	21	44
HPPSC25	Ø25	50	29.6	25.3	23	47.9
HPPSC32	Ø32	20	36.5	32.2	27	57.15
HPPSC40	Ø40	20	45.7	40.5	35.1	73.3
HPPSC50	Ø50	10	56.5	50.5	44.2	91.4
HPPSC63	Ø63	6	70.3	63.6	55.2	114.57
HPPSC80 ¹	Ø80	1	99.4	89.4	73	148

¹ UNSUITABLE FOR RIGID CONDUIT

MADE IN AUSTRALIA*



NEW

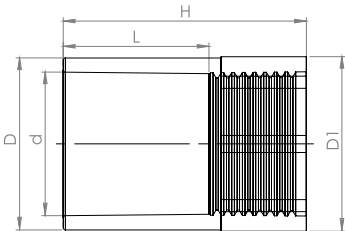
Transition Coupling

For transitioning between HPLEX® Corrugated Conduit and rigid conduit.

Product Codes and Dimensions (mm)

PART NUMBER	TYPE	COLOUR	QTY/BOX	D	d	L	D1	d1	H
HPPTC80	Ø80	ORANGE	1	99.9	88.95	75.30	106.93	95.88	153.61
HPPTC80G	Ø80	GREY	1	99.9	88.95	75.30	106.93	95.88	153.61
HPPTC80W	Ø80	WHITE	1	99.9	88.95	75.30	106.93	95.88	153.61

MADE IN AUSTRALIA



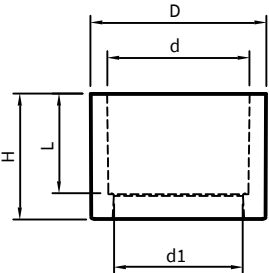
PVC CONDUIT FITTINGS

Female Screwed Coupling

Product Codes and Dimensions (mm)

PART NUMBER	TYPE	QTY/BOX	D	d	L	D1	H
HPPFSC20	Ø20	50	24.2	20.19	20.5	22.8	34.2
HPPFSC25	Ø25	50	29.62	24.19	22.7	27.8	36

MADE IN AUSTRALIA*



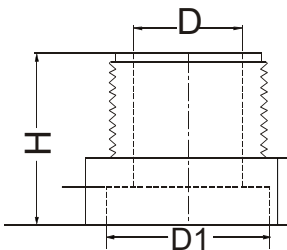
PVC CONDUIT FITTINGS

Plain Reducer

Product Codes and Dimensions (mm)

PART NUMBER	TYPE	QTY/BOX	D	d	L	H	d1
HPPPR2016	Ø20 - Ø16	50	20	16	18	21.6	13.6
HPPPR2520	Ø25 - Ø20	50	25	20	22	24.8	17.3
HPPPR3225	Ø32 - Ø20	50	32	25	22.3	27	22.3
HPPPR4032	Ø40 - Ø32	20	40	32	25.6	31.2	28.5
HPPPR5040	Ø50 - Ø40	20	50	40	28.8	25.5	36

MADE IN AUSTRALIA*



PVC CONDUIT FITTINGS

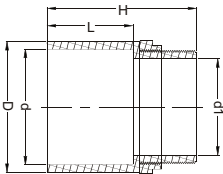
Threaded Reducer

Product Codes and Dimensions (mm)

PART NUMBER	TYPE	QTY/BOX	D	D1	H
HPPTR2520	Ø25 - Ø20	50	16.5	18.7	23.1
HPPTR3225	Ø32 - Ø25	50	20.5	23.4	23.8
HPPTR4032	Ø40 - Ø32	20	27.8	30.2	28.1
HPPTR5040	Ø50 - Ø40	20	36.2	38.9	32.1

Adaptors, Elbows & Tees

Conduit Fittings



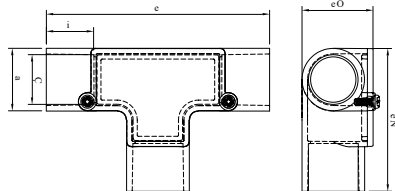
PVC CONDUIT FITTINGS

Converting Adaptor with Lock ring

Product Codes and Dimensions (mm)

PART NUMBER	TYPE	QTY/BOX	D	d	L	D1	H
HPPCAR20	Ø20	50	24.8	20.28	20.51	13.1	35.8
HPPCAR25	Ø25	50	31.8	25.19	22.51	19.3	40.1
HPPCAR32	Ø32	50	37.7	32.19	26	25.4	48
HPPCAR40	Ø40	20	47	40.29	27.51	33	51.8
HPPCAR50	Ø50	10	57.5	50.29	37.4	42.1	64.3

MADE IN AUSTRALIA*



PVC CONDUIT FITTINGS

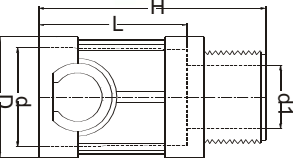
Inspection Tee

Product Codes and Dimensions (mm)

PART NUMBER	TYPE	QTY/BOX	D	d	L	H	H1	H2	MADE IN AUSTRALIA
HPPIT20	Ø20	10	25.2	20.19	23.29	108.63	69.88	30.97	✓*
HPPIT25	Ø25	10	30.72	25	23.29	109.24	69.88	34.89	✓*

MADE IN AUSTRALIA*

PART NUMBER	TYPE	QTY/BOX	D	d	L	H	H1	H2
HPPIT32	Ø32	5	38	32	25.8	131.8	84.3	44

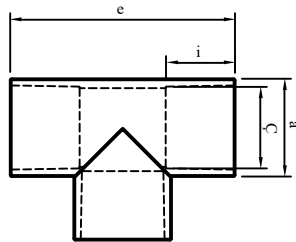


PVC CONDUIT FITTINGS

Clip adaptor

Product Codes and Dimensions (mm)

PART NUMBER	TYPE	QTY/BOX	D	d	L	d1	H
HPPCA20	Ø20	50	25.05	20.25	30.5	13	46.8



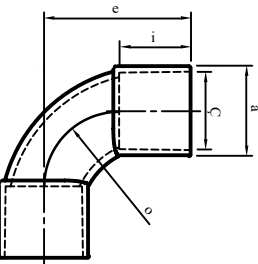
PVC CONDUIT FITTINGS

Solid Tee

Product Codes and Dimensions (mm)

PART NUMBER	TYPE	QTY/BOX	D	d	L	H
HPPST20	Ø20	20	24	20.16	16.56	54.2
HPPST25	Ø25	20	29.3	25.19	20.28	67

MADE IN AUSTRALIA*



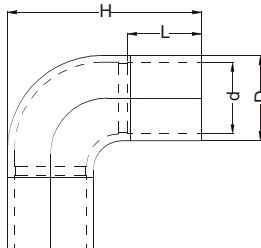
PVC CONDUIT FITTINGS

Solid Elbow

Product Codes and Dimensions (mm)

PART NUMBER	TYPE	QTY/BOX	D	d	L	R	H
HPPSE20	Ø20	20	24.52	20.39	19.80	34.51	40.5
HPPSE25	Ø25	20	29.35	25.32	23.12	38.81	47.64

MADE IN AUSTRALIA*



PVC CONDUIT FITTINGS

Inspection Elbow

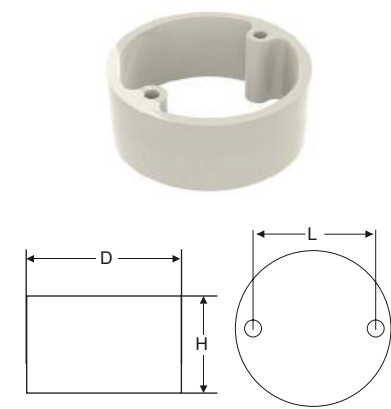
Product Codes and Dimensions (mm)

PART NUMBER	TYPE	QTY/BOX	D	d	L	H
HPPIE20	Ø20	20	25.2	20.17	20.18	61.9
HPPIE25	Ø25	20	30.92	25.19	22.19	69.43

MADE IN AUSTRALIA*

Other Fittings

Conduit Fittings



PVC CONDUIT FITTINGS

Extension Ring

Product Codes and Dimensions (mm)

PART NUMBER	TYPE	QTY/BOX	D	L	H
HPPER12	Ø12	20	65.6	49	12
HPPER25	Ø25	20	65.6	49	25



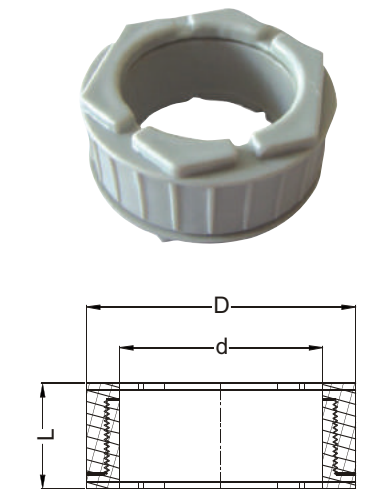
PVC CONDUIT FITTINGS

Conduit Clip

Product Codes and Dimensions (mm)

PART NUMBER	TYPE	QTY/BOX
HPPCF20	Ø20	100
HPPCF25	Ø25	100
HPPCF32	Ø32	50

MADE IN AUSTRALIA*



PVC CONDUIT FITTINGS

Male + Female Conduit Bush

Product Codes and Dimensions (mm)

PART NUMBER	TYPE	QTY/BOX	D	d	L
HPPFCB20	Ø20	100	26.6	13.25	17.45
HPPFCB25	Ø25	100	32	21	18
HPPFCB32	Ø32	50	38.7	26.6	17.8
HPPFCB40	Ø40	25	47.6	34.5	23.6
HPPFCB50	Ø50	25	57.7	43.6	22.6

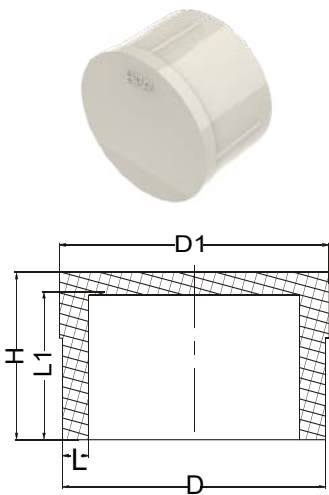


PVC CONDUIT FITTINGS

Straight Gland

Product Codes and Dimensions (mm)

PART NUMBER	TYPE	QTY/BOX	D	d	L	D1	H
HPPSG20	Ø20	50	30	20.25	20	18.8	39
HPPSG25	Ø25	50	37	25.35	26	23.9	49
HPPSG32	Ø32	20	45	32.4	27.9	31.3	47.8
HPPSG40	Ø40	9	55.5	40.3	36.3	39.6	53.4
HPPSG50	Ø50	6	66.4	50.3	40.2	49.26	57.7

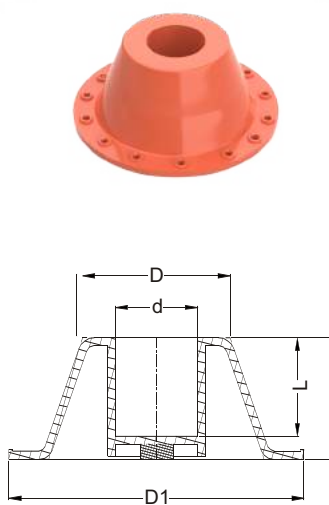


PVC CONDUIT FITTINGS

End Plug

Product Codes and Dimensions (mm)

PART NUMBER	TYPE	QTY/BOX	D	D1	L	L1	H
HPPEP20	Ø20	100	20	20.5	2	11	12.8
HPPEP20	Ø25	100	25	25.4	1.5	13	15.3



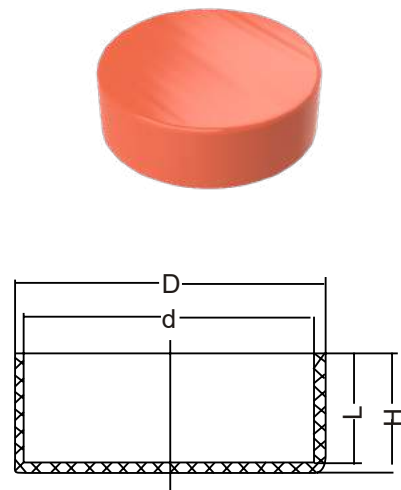
PVC CONDUIT FITTINGS

Locating Flange

Product Codes and Dimensions (mm)

PART NUMBER	TYPE	QTY/BOX	D	d	L	D1	H
HPPLF20	Ø20	10	45	20	30	90	37
HPPLF25	Ø25	10	45	25	30	90	37

*HP Profiles is currently transitioning to the Australian production of PVC fittings. We are unable to guarantee our supply of PVC fittings will be Australian made. Please see individual product listing for Australian made availability and refer to the label on your product box for the country of origin.

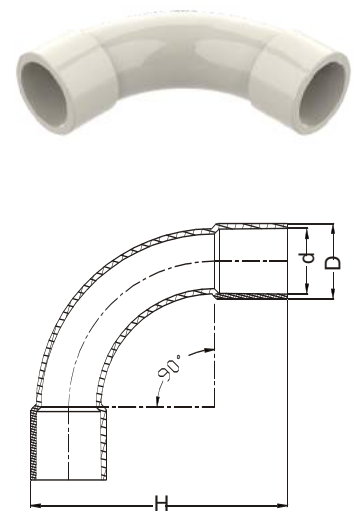


PVC CONDUIT FITTINGS

Conduit Cap

Product Codes and Dimensions (mm)

PART NUMBER	TYPE	QTY/BOX	D	d	L	H
HPPCC32HD	Ø32	1	36.9	32.1	19.5	22.5
HPPCC40HD	Ø40	1	45.5	40.1	24.1	26.8
HPPCC50HD	Ø50	1	56.2	50.2	28	31
HPPCC63HD	Ø63	1	69.4	63.2	34.3	37.5
HPPCC80HD	Ø80	1	96.2	89.2	26	29.5
HPPCC100HD	Ø100	1	122.8	114.8	26	30
HPPCC125HD	Ø125	1	149.2	140.8	30.8	35
HPPCC150HD	Ø150	1	169.4	161	35.5	40

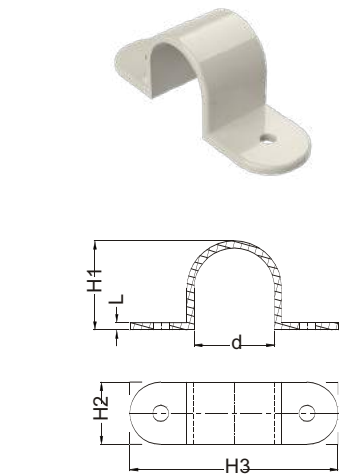


PVC CONDUIT FITTINGS

STANDARD BEND

Product Codes and Dimensions (mm)

PART NUMBER	TYPE	QTY/BOX	D (mm)	d (mm)	H (mm)
HPPSB20	Ø20	50	25.2	20.4	82.45
HPPSB25	Ø25	20	30.4	25.4	106.45
HPPSB32	Ø32	10	37.6	32.4	150.65
HPPSB40	Ø40	20	46.6	40.4	158.15
HPPSB50	Ø50	10	57.4	50.25	209.65

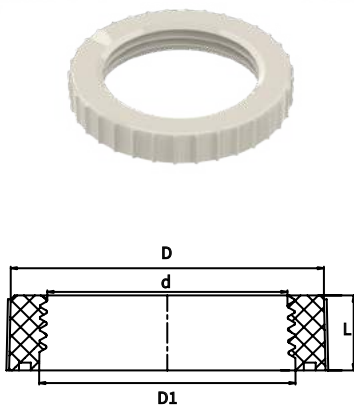


PVC CONDUIT FITTINGS

Conduit Saddle

Product Codes and Dimensions (mm)

PART NUMBER	TYPE	QTY/BOX	D	L	H1	H2	H3
HPPSDL20	Ø20	100	19.6	2.2	21.4	19	63.6
HPPSDL25	Ø25	100	25.4	2.2	27.2	19	63.5
HPPSDL32	Ø32	50	31.2	2.6	34.6	19	71.2

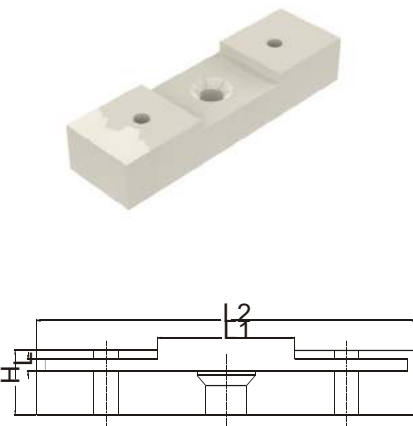


PVC CONDUIT FITTINGS

Lock Ring

Product Codes and Dimensions (mm)

PART NUMBER	TYPE	QTY/BOX	D	d	L	D1
HPPLR20	Ø20	50	27.8	18.4	4.8	20.4
HPPLR25	Ø25	50	32.6	23.5	5	25.5
HPPLR32	Ø32	50	39.7	30.4	9.6	32.5
HPPLR40	Ø40	20	48.7	38.4	11.2	40.5
HPPLR50	Ø50	10	59.60	48.4	12.1	50.5



PVC CONDUIT FITTINGS

Saddle Spacer

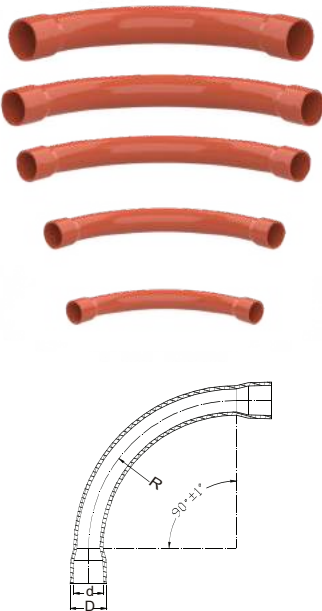
Product Codes and Dimensions (mm)

PART NUMBER	TYPE	QTY/BOX	L1	L2	L	H
HPPSS20	Ø20	50	26	70.6	2.9	12.5
HPPSS25	Ø25	50	70.6	30.9	2.5	12.4



Sweep Bends

Conduit Fittings

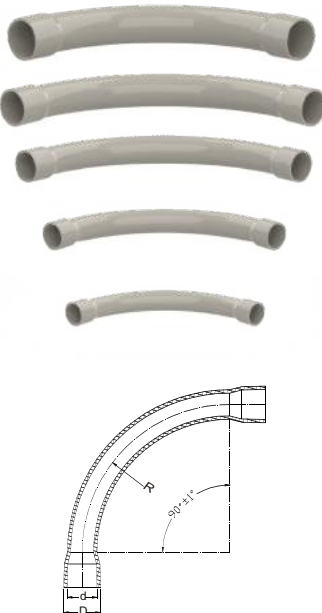


PVC CONDUIT FITTINGS

90° Heavy-duty Sweep Bend Orange

Product Codes and Dimensions (mm)

PART NUMBER	TYPE	D	d	R
HPPSWB20HD90OR	Ø20	24.85	20.25	100
HPPSWB20HD90OR-160	Ø20	24.85	20.25	160
HPPSWB25HD90OR	Ø25	30.25	25.25	135
HPPSWB32HD90OR	Ø32	37.65	32.25	180
HPPSWB32HD90OR-305	Ø32	37.65	32.25	305
HPPSWB40HD90OR	Ø40	46.45	40.25	240
HPPSWB50HD90OR	Ø50	57.05	50.25	280
HPPSWB63HD90OR	Ø63	71.05	63.25	280



PVC CONDUIT FITTINGS

90° Medium-Duty UV Resistant Grey

Product Codes and Dimensions (mm)

PART NUMBER	TYPE	D	d	R
HPPSWB20HD90GR	Ø20	24.85	20.25	100
HPPSWB20HD90GR -160	Ø20	24.85	20.25	160
HPPSWB25HD90GR	Ø25	30.25	25.25	135
HPPSWB32HD90GR	Ø32	37.65	32.25	180
HPPSWB32HD90GR - 305	Ø32	37.65	32.25	305
HPPSWB40HD90GR	Ø40	46.45	40.25	240
HPPSWB50HD90GR	Ø50	57.05	50.25	280
HPPSWB63HD90GR	Ø63	71.05	63.25	280

CONDUIT + FITTINGS



AUSTRALIAN MADE ELECTRICAL FITTINGS

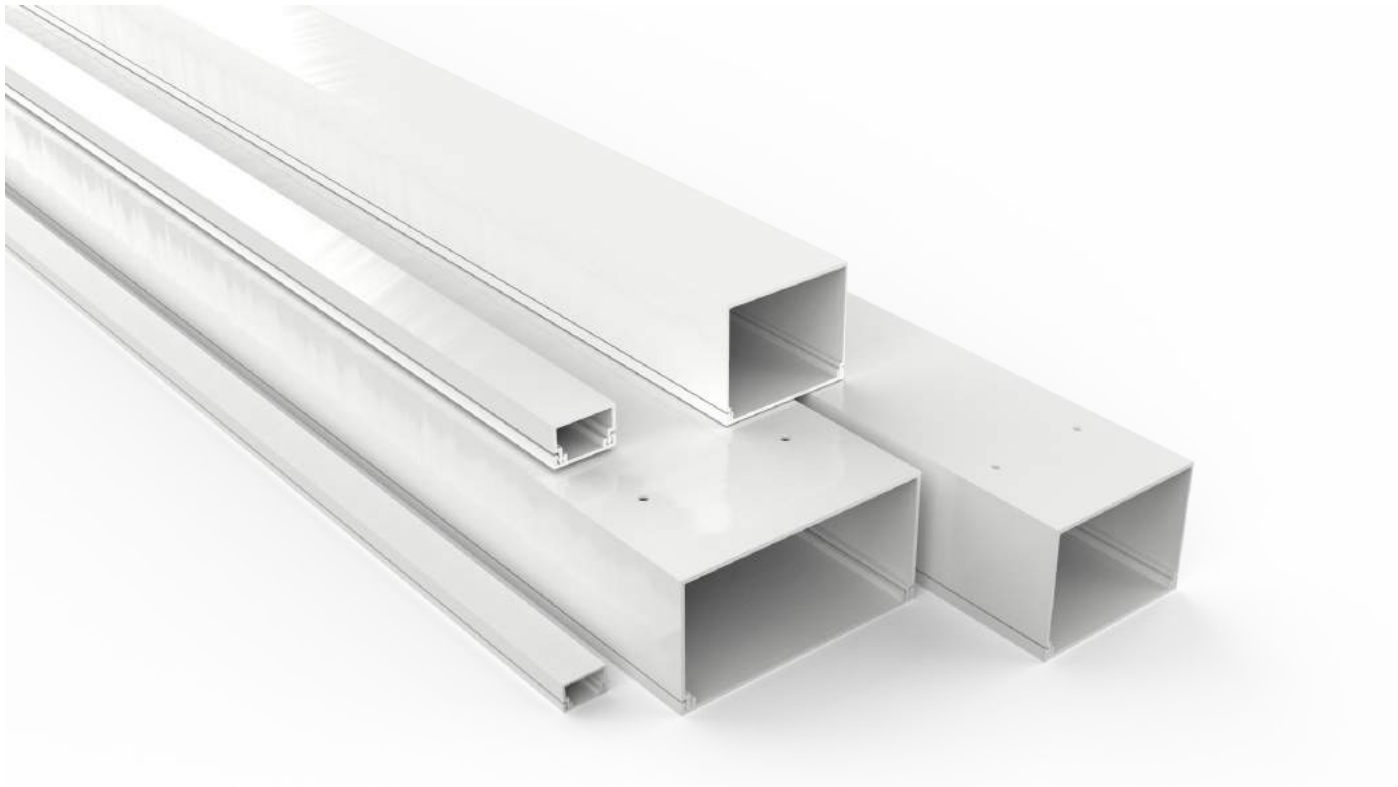
Ducting Systems

Electrical Ducting
PVC ducting for the electrical industry

46

Ducting Accessories
Accessories for electrical ducting

48



AUSTRALIAN MADE ELECTRICAL DUCTING



Electrical Ducting

Electrical Ducting - uPVC



HP Profiles' electrical ducting is manufactured in Australia to the Australian standards. Made from rigid uPVC it is shockproof, self-extinguishing V0 (UL94) and system protection rated to IP40.

HP Profiles Electrical ducting is ideal for general electrical work requiring the concealment and protection of electrical cables. Due to its grey colour it is suitable for above ground installations where a reduction of visibility is desired from the installer or customer.

Pre-punched holes are available on certain dimensions to allow easy installation. Available from 16mm to 150mm in 4 meter lengths.

Available in 2 meter lengths on request



PROPERTIES

Material	uPVC
Rated Duty	Medium-duty
Colour	White RAL 9003 Light Grey RAL 7035
B.E.P Certified	Yes
Flame Resistance	Non-flame propagating (UL94-V0)
Lead Free	Yes
Dielectric Strength	10-40kV/mm
Halogen Free	No
Ageing Resistance	> 25 years
Rodent repellent	Not attractive to rodents
Country of Manufacture	Australia

SPECIFICATIONS

Compression Strength	750 N
Impact Resistance	6J
UV Resistance	Extreme UV (T)
Minimum Working Temperature	-5°C
Maximum Working Temperature	+60°C
Resistance to Bending	Rigid
Ingress Protection (IP)	IP40 (Duct + Lid)

STANDARDS

Ø16 to Ø150	AS/NZS 4296:1995
-------------	------------------

Product Codes and Dimensions

White

PART NUMBER	DESCRIPTION	PRE-PUNCHED	PACK QTY
HPPD1616WH	White Electrical PVC Wall Duct & Lid 16mm X 16mm X 4 m	•	10
HPPD1616TWH	White Electrical PVC Wall Duct & Lid 16mm X 16mm X 4 m - Adhesive Taped		10
HPPD2516WH	White Electrical PVC Wall Duct & Lid 25mm X 16mm X 4 m	•	10
HPPD2516TWH	White Electrical PVC Wall Duct & Lid 25mm X 16mm X 4 M - Adhesive Taped		10
HPPD2525WH	White Electrical PVC Wall Duct & Lid 25mm X 25mm X 4 m	•	10
HPPD4025-2WH	White Electrical PVC Wall Duct & Lid 40mm X 25mm X 4 M - Dual Channel		4
HPPD4025WH	White Electrical PVC Wall Duct & Lid 40mm X 25mm X 4 m	•	4
HPPD5025-2WH	White Electrical PVC Wall Duct & Lid 50mm X 25mm X 4 M - Dual Channel		4
HPPD5025WH	White Electrical PVC Wall Duct & Lid 50mm X 25mm X 4 m	•	4
HPPD5050WH	White Electrical PVC Wall Duct & Lid 50mm X 50mm X 4 m	•	4
HPPD7550WH	White Electrical PVC Wall Duct & Lid 75mm X 50mm X 4 m	•	1
HPPD7575WH	White Electrical PVC Wall Duct & Lid 75mm X 75mm X 4 m	•	1
HPPD10050WH	White Electrical PVC Wall Duct & Lid 100mm X 50mm X 4 m	•	1
HPPD100100WH	White Electrical PVC Wall Duct & Lid 100mm X 100mm X 4 m	•	1
HPPD15075WH	White Electrical PVC Wall Duct & Lid 150mm x 75mm x 4 m		1

Grey

PART NUMBER	DESCRIPTION	PRE-PUNCHED	PACK QTY
HPPD1616GY	Grey Electrical PVC Wall Duct & Lid 16mm x 16mm x 4 m	•	10
HPPD2516GY	Grey Electrical PVC Wall Duct & Lid 25mm x 16mm x 4 m	•	10
HPPD2525GY	Grey Electrical PVC Wall Duct & Lid 25mm x 25mm x 4 m	•	10
HPPD4025-2GY	Grey Electrical PVC Wall Duct & Lid 40mm x 25mm x 4 m - Dual Channel		4
HPPD4025GY	Grey Electrical PVC Wall Duct & Lid 40mm x 25mm x 4 m	•	4
HPPD5025-2GY	Grey Electrical PVC Wall Duct & Lid 50mm x 25mm x 4 m - Dual Channel		4
HPPD5025GY	Grey Electrical PVC Wall Duct & Lid 50mm x 25mm x 4 m	•	4
HPPD5050GY	Grey Electrical PVC Wall Duct & Lid 50mm x 50mm x 4 m	•	4
HPPD7550GY	Grey Electrical PVC Wall Duct & Lid 75mm x 50mm x 4 m	•	1
HPPD7575GY	Grey Electrical PVC Wall Duct & Lid 75mm x 75mm x 4 m	•	1
HPPD10050GY	Grey Electrical PVC Wall Duct & Lid 100mm x 50mm x 4 m	•	1
HPPD100100GY	Grey Electrical PVC Wall Duct & Lid 100mm x 100mm x 4 m	•	1
HPPD15075GY	Grey Electrical PVC Wall Duct & Lid 150mm x 75mm x 4 m		1

Ideal uses

Residential or Commercial Installations

Compatible with

Ducting Fittings pg. 48

Ducting Fittings

Ducting Systems / Ducting Accessories

HP Profiles' ducting fittings and accessories are a quality product suitable for internal and external electrical requirements. Install with confidence as they are Australian made and B.E.P Certified.



EXTREME UV (T)
STABILISATION



MANUFACTURED
IN AUSTRALIA



B.E.P CERTIFIED



PVC FITTINGS

End Cap

Product Codes and Dimensions (mm)

PART NUMBER	TYPE	COLOUR
HPPEC1616WH	16x16	WHITE
HPPEC1616GY	16x16	GREY
HPPEC2516WH	25x16	WHITE
HPPEC2516GY	25x16	GREY
HPPEC2525WH	25x25	WHITE
HPPEC2525GY	25x25	GREY
HPPEC4025WH	40x25	WHITE
HPPEC4025GY	40x25	GREY
HPPEC5025WH	50x25	WHITE
HPPEC5025GY	50x25	GREY
HPPEC5050WH	50x50	WHITE
HPPEC5050GY	50x50	GREY
HPPEC7550WH	75x50	WHITE
HPPEC7550GY	75x50	GREY
HPPEC7575WH	75x75	WHITE
HPPEC7575GY	75x75	GREY
HPPEC10050WH	100x50	WHITE
HPPEC10050GY	100x50	GREY
HPPEC100100WH	100x100	WHITE
HPPEC100100GY	100x100	GREY
HPPEC15075WH	150x75	WHITE
HPPEC15075GY	150x75	GREY

PRE-PUNCHED HOLES FOR EASY INSTALLATION





Enclosures and Accessories

02



- 52 Adaptable Enclosures
- 61 Accessories

Adaptable Enclosures

SCABOX Series

- Adaptable Box - IP56
- Deep Adaptable Box - IP56

OMNIA System

- Surface Mounting Enclosures - IP66
- Surface Mounting Boxes - IP67
- Flush Mounting Boxes - IP55

DOMINO Series

- Consumer Units - IP66
- Enclosure Panel with Cut-outs - IP66

Accessories

54

55
55

56

57
57
57

58

59
60

61

Consumer units, Distribution Assemblies and Junction Boxes

In a modern electrical system diverting and distributing is as important as connecting and involves design choices of equal responsibility. Scame offers a complete range of junction boxes, consumer units and distribution assemblies based on a concept of modularity that allows interaction with the range of inlets and socket outlets Scame has to offer.

SCABOX Series offers junction boxes for the modern electrical system in the industrial, tertiary and civil sectors. Available in different sizes and materials to meet the most different installation needs.

DOMINO Series is a complete range of watertight consumer units for surface installation, from 2 up to 64 DIN modules, modular and combinable, DOMINO consumer units are characterised by a high flexibility of use and considerable expansion possibilities.

OMNIA System is a complete range of interlocked socket outlets from 16 to 63A, fused or without fuse with compact dimensions and great installation flexibility. Available as flush mounting or surface mounting versions in single configurations or up to 4 sockets through a modular base system that even provides a junction box or switchboard

OMNIA in flush mounting configuration finds its ideal use in the tertiary sector but the dimensions of the flange allow it to be installed in the DOMINO and MBOX distribution boards for industrial and construction site applications, taking advantage of the modularity that has always been at the base of the SCAME systems.

The OMNIA and DOMINO Series are compatible with Australian 56 Series/ISO or similar when used with the included Adaptor Plate Serie 56 (654.0127).

Hinges Kit

An interesting accessory for the SCABOX Series, a practical hinge kit is available that permits the book-like opening of the cover while keeping it integral with the base.

The kit can be optionally applied inside the casing in a quick and simple manner; thus the SCABOX acquires greater functionality – perfect in the installation phase, during the wiring operations and extremely practical for the subsequent phases of maintenance and inspection, since it keeps the cover supported and hinged to the base.

By applying light pressure on the small hinge lever, it is possible to remove the cover from the base and to easily separate the two components. With a simple locking manoeuvre it is just as easy to reconnect the cover to the base.

Hinges kit (3 pieces). Item 654.0085

SCABOX Series

Surface mounted Adaptable Enclosures



SCABOX is a range of junction boxes made of halogen-free, shock-proof and self-extinguishing thermoplastic material.

SCABOX junction boxes for electrical diverting are available in a wide variety of sizes and configurations: with or without cable sleeves, with high base for a greater wiring space and with transparent cover to guarantee the inspection of the cabling and the devices housed inside.

The base-cover coupling is guaranteed by stainless steel or plastic quarter-turn captive screws, while the IP rating is ensured by the co-molded gasket, integral with the cover and unlosable, for a constant protection against dust and liquids over time. Total insulation to EN 60439-1 (when used with screw sealing caps 654.0080)

Standards

EN60670-1

Boxes and enclosures for electrical accessories for household and similar fixed electrical installations.

Part 1: general requirements

EN60670-22

Boxes and enclosures for electrical accessories for household and similar fixed electrical installations.

Part 22: particular requirements for connecting boxes and enclosures.

Technical Characteristics

Protection Degree	IP55-IP56
Operating ambient temperature according to the reference standard	-25°C to +35°C
Max operating ambient temperature	60°C
Glow wire test	650°C
Material	Self-extinguishing engineering plastic
IK degree at 20°C	IK04 - IK08
Insulation class	Class II (double insulation)
Halogen free	Yes (blank side versions)
DIN rail fixing	Yes
Colour	Grey RAL 7035

Chemical and Atmospheric Agents resistance

SALINE SOLUTION	ACIDS		BASES		SOLVENTS				MINERAL OIL	UV RAYS
	CONCENTRATED	DILUTED	CONCENTRATED	DILUTED	HEXANE	BENZOL	ACETONE	ALCOHOL		
Resistant	Limited Resistance	Resistant	Limited Resistance	Resistant	Not Resistant	Not Resistant	Not Resistant	Limited Resistance	Limited Resistance	Resistant



Blank Cover



Clear Cover

SCABOX SERIES

Adaptable Box - IP56

Product Codes and Dimensions

PART NUMBER		INTERNAL DIMENSIONS	FASTENING SCREWS	PACK QTY
BLANK COVER	CLEAR COVER			
686.204	686.224	100x100x50	4	1/40
686.205	686.225	120x80x50	4	1/42
686.206	686.226	150x110x70 (K1)	4	1/48
686.207	686.227	190x140x70 (K1)	4	1/30
686.208	686.228	240x190x90 (K1)▲	4	1/16
686.209	686.229	300x220x120 (K1)▲	4	1/8
686.210	686.230	380x300x120 (K1)▲	4	1/4
686.211	686.231	452x320x130 (K2)▲	6	1

▲ Suitable for hinges mounting 654.0085
(K1) It is possible to use the wall mounting brackets kit item 654.0021
(K2) It is possible to use the wall mounting brackets kit item 654.0023



Blank Cover



Clear Cover

SCABOX SERIES

Deep Adaptable Box - IP56

Product Codes and Dimensions

PART NUMBER		INTERNAL DIMENSIONS	FASTENING SCREWS	PACK QTY
BLANK COVER	CLEAR COVER			
686.404	686.424	100x100x80	4	1/24
686.408	686.428	240x190x125 ▲	4	1/6
686.409	686.429	300x220x170 ▲	4	1/6
686.410	686.430	380x300x170 (K1)▲	4	1/3
686.411	686.431	452x320x180 (K2)▲	6	1

▲ Suitable for hinges mounting 654.0085
(K1) It is possible to use the wall mounting brackets kit item 654.0021
(K2) It is possible to use the wall mounting brackets kit item 654.0023

OMNIA System

Flush and surface mounted modular system



OMNIA is a complete range of interlocked socket outlets from 16 to 63A, fused or without fuse with compact dimensions and great installation flexibility. Available as flush mounting or surface mounting versions in single configurations or up to 4 sockets through a modular base system that even provides a junction box or switchboard

OMNIA in flush mounting configuration finds its ideal use in the tertiary sector but the dimensions of the flange allow it to be installed in the DOMINO and MBOX distribution boards for industrial and construction site applications, taking advantage of the modularity that has always been at the base of the SCAME systems.

Adaptor Plate Serie 56 (654.0127) is included with every enclosure for compatibility with Australian sockets and switches.

Standards

EN 60670-1
Boxes and enclosures for electrical accessories for household and similar fixed electrical installations.
Part 1: general requirements

EN 60670-24
Boxes and enclosures for electrical accessories for household and similar fixed electrical installations
Part 24: particular requirements for enclosures for housing protective devices and other power dissipating electrical equipment



Technical Characteristics

Protection Degree	IP40 - IP55 - IP66
Operating ambient temperature according to the reference standard	-25°C to +35°C
Max operating ambient temperature	60°C
Glow wire test	650°C/850°C
Material	Engineering plastic
IK degree at 20°C	IK08
Cable inlets	PG/METRIC
Insulation class	Class II (double insulation)
Colour	Grey RAL 7035
Compatible with 56 Series/ISO or similar	Yes with included Adaptor Plate (654.0127)

Adaptor plate for 56 Series / ISO

PART NUMBER	DESCRIPTION
654.0127	CUT-OUT PLATE SERIE 56 ADAPTOR

Chemical and Atmospheric Agents resistance

SALINE SOLUTION	ACIDS		BASES		SOLVENTS				MINERAL OIL	UV RAYS
	CONCENTRATED	DILUTED	CONCENTRATED	DILUTED	HEXANE	BENZOL	ACETONE	ALCOHOL		
Resistant	Limited Resistance	Resistant	Limited Resistance	Resistant	Not Resistant	Not Resistant	Not Resistant	Limited Resistance	Limited Resistance	Resistant

Surface Mounting Enclosures - IP66



PART NUMBER	DESCRIPTION	DIMENSIONS (mm)	DIN MODULES (17.5mm)	DISSIPABLE POWER	PACK QTY
572.0311	Consumer Unit 2 Sockets	136x472x146	6	12W	1



PART NUMBER	DESCRIPTION	DIMENSIONS (mm)	DIN MODULES (17.5mm)	DISSIPABLE POWER	PACK QTY
572.0313	Consumer Unit 3 Sockets	136x616x146	6	12W	1



PART NUMBER	DESCRIPTION	DIMENSIONS (mm)	DIN MODULES (17.5mm)	DISSIPABLE POWER	PACK QTY
572.0315	Consumer Unit 4 Sockets	287x408x146	14	12W	1



PART NUMBER	DESCRIPTION	DIMENSIONS (mm)	DIN MODULES (17.5mm)	DISSIPABLE POWER	PACK QTY
572.0312	Junction Box 2 Sockets	136x472x146	-	-	1



PART NUMBER	DESCRIPTION	DIMENSIONS (mm)	DIN MODULES (17.5mm)	DISSIPABLE POWER	PACK QTY
572.0314	Junction Box 3 Sockets	136x616x146	-	-	1



PART NUMBER	DESCRIPTION	DIMENSIONS (mm)	DIN MODULES (17.5mm)	DISSIPABLE POWER	PACK QTY
572.0316	Junction Box 4 Sockets	287x408x146	-	-	1

Surface Mounting Boxes - IP67



PART NUMBER	DESCRIPTION	DIMENSIONS (mm)	PACK QTY
572.0310	Box for Omnia 16/32A	136x125x70	6
572.0322	Box for 2 Omnia 16/32A	136x275x70	6
572.0308	Box for Omnia 63A	136x275x89	6

Flush Mounting Box - IP55



PART NUMBER	DESCRIPTION	DIMENSIONS (mm)	PACK QTY
572.0200	Box to be used in conjunction with the frame	160x148x78	6
572.0205	Box for plasterboard walls to be used with the frame	160x149x75	6
572.0220	Frame for flush mounting boxes complete with gasket	174x163x19	6

DOMINO Series

Surface Mounted Enclosures



When talking about consumer units and distribution assemblies the key words are flexibility and modularity. Two concepts perfectly represented by the DOMINO Series, which is able to meet countless installation needs in small business and industrial environments as well as in the tertiary sector. Its modern design allows it to fit in pleasantly in any work environment. DOMINO Series offers a complete range of consumer units and wall-mounting enclosures for distribution assemblies which are airtight and modular and feature high flexibility of use and significant expansion potential

Adaptor Plate Serie 56 (654.0127) is included with every enclosure for compatibility with Australian sockets and switches.

Standards

EN 60670-1
Boxes and enclosures for electrical accessories for household and similar fixed electrical installations.
Part 1: general requirements

EN 60670-24
Boxes and enclosures for electrical accessories for household and similar fixed electrical installations
Part 24: particular requirements for enclosures for housing protective devices and other power dissipating electrical equipment

EN 62208
Empty enclosure for low-voltage switchgear
Part 1: general requirements

EN 61439-3
Low-voltage switchgear and controlgear assemblies
Part 3: distribution boards intended to be operated by ordinary persons (DBO)

Technical Characteristics

Protection Degree	IP40 - IP66
Operating ambient temperature according to the reference standard	-25°C to +35°C
Max operating ambient temperature	60°C
Glow wire test	650°C
Material	Self-extinguishing engineering plastic
IK degree at 20°C	IP40: IK06 IP66: IK08
Cable inlets	PG/METRIC
Dissipable power according to CEI 23-49 standard	9÷140W
Insulation class	Class II (double insulation)
Terminal blocks fixing possibility	Yes
Colour	Grey RAL 7035 White RAL 9003
Compatible with 56 Series/ISO or similar	Yes with included Adaptor Plate (654.0127)

EN 61439-4
Low-voltage switchgear and controlgear assemblies
Part 4: particular requirements for assemblies for construction sites (ACS)

Chemical and Atmospheric Agents resistance

SALINE SOLUTION	ACIDS		BASES		SOLVENTS				MINERAL OIL	UV RAYS
	CONCENTRATED	DILUTED	CONCENTRATED	DILUTED	HEXANE	BENZOL	ACETONE	ALCOHOL		
Resistant	Limited Resistance	Resistant	Limited Resistance	Resistant	Resistant	Not Resistant	Not Resistant	Resistant	Not Resistant	Resistant

Consumer Units - IP66



PART NUMBER	DIMENSIONS	MODULE	DIN MODULES (17.5MM)	DISSIPABLE POWER	PACK QTY
672.2002	135x76x102	M135	2	6W	1/24



PART NUMBER	DIMENSIONS	MODULE	DIN MODULES (17.5MM)	DISSIPABLE POWER	PACK QTY
672.2004	190x112x106	M190	4	10W	1/16



PART NUMBER	DIMENSIONS	MODULE	DIN MODULES (17.5MM)	DISSIPABLE POWER	PACK QTY
672.2008	190x184x106	M190	8	14W	1/10



PART NUMBER	DIMENSIONS	MODULE	DIN MODULES (17.5MM)	DISSIPABLE POWER	PACK QTY
672.2012	190x184x106	M250	12	22W	1/9



PART NUMBER	DIMENSIONS	MODULE	DIN MODULES (17.5MM)	DISSIPABLE POWER	PACK QTY
672.2016	250x328x140	M250	12	28W	1/6



PART NUMBER	DIMENSIONS	MODULE	DIN MODULES (17.5MM)	DISSIPABLE POWER	PACK QTY
672.4024	400x256x140	M400	24 (12x2)	30W	1/6



PART NUMBER	DIMENSIONS	MODULE	DIN MODULES (17.5MM)	DISSIPABLE POWER	PACK QTY
672.4032	400x328x140	M400	32 (16x2)	47W	1/4



PART NUMBER	DIMENSIONS	MODULE	DIN MODULES (17.5MM)	DISSIPABLE POWER	PACK QTY
672.5048	550x328x140	M550	48 (16x3)	54W	1/3



PART NUMBER	DIMENSIONS	MODULE	DIN MODULES (17.5MM)	DISSIPABLE POWER	PACK QTY
672.7064	700x328x140	M700	64 (16x4)	60W	1

DOMINO SERIES

Enclosure Panel with Cut-outs - IP66



PART NUMBER	DIMENSIONS	MODULE	DIN MODULES (17.5MM)	DISSIPABLE POWER	SOCKETS	PACK QTY
672.1200	150x256x115	M150	-	18W	2	1/6

Flange 136x125



PART NUMBER	DIMENSIONS	MODULE	DIN MODULES (17.5MM)	DISSIPABLE POWER	SOCKETS	PACK QTY
672.4216	400x328x140	M400	16	28W	2	1/4

Flange 136x125



PART NUMBER	DIMENSIONS	MODULE	DIN MODULES (17.5MM)	DISSIPABLE POWER	SOCKETS	PACK QTY
672.5416	550x328x140	M550	16	28W	6	1/3

Flange 136x125



PART NUMBER	DIMENSIONS	MODULE	DIN MODULES (17.5MM)	DISSIPABLE POWER	SOCKETS	PACK QTY
672.5316	550x328x140	M550	16	28W	3	1/3

Flange 136x125

Flange 136x275



PART NUMBER	DIMENSIONS	MODULE	DIN MODULES (17.5MM)	DISSIPABLE POWER	SOCKETS	PACK QTY
672.5522	550x477x140	M550	24	28W	5	1/2

Flange 136x125

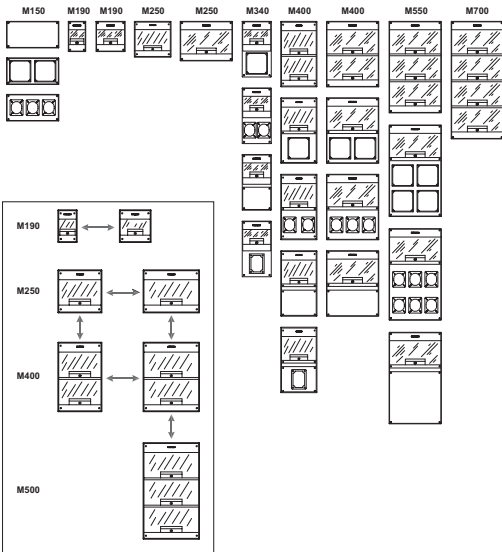
Flange 136x275



PART NUMBER	DIMENSIONS	MODULE	DIN MODULES (17.5MM)	DISSIPABLE POWER	SOCKETS	PACK QTY
672.5622	550x477x140	M550	24	28W	6	1/2

Flange 136x125

Flange 70x87



Modular Design

The system is composed of a series of modules that make up the different kinds of distrubution assemblies and consumer units.

MODULE 150: 150x328x115mm

MODULE 250: 250x328x140mm

MODULE 400: 400x328x140mm

MODULE 550: 550x328x140mm

MODULE 700: 700x328x140mm

Accessories

for SCABOX Series



Mounting Plate

PART NUMBER	DIMENSIONS	SUITABLE BOX	FASTENING SCREWS	PACK QTY
654.0787	176x126x1.5	190x140	4	1
654.0788	226x176x1.5	240x190	4	1
654.0789	285x173x1.5	300x220	4	1
654.0790	358x252x1.5	380x300	4	1
654.0791	414x318x1.5	452x372	4	1



Sealing Caps

PART NUMBER	DESCRIPTION	PACK QTY
654.0080	NO. 12 SEALING CAPS	10/100



Sealing Kit

PART NUMBER	SUITABLE BOXES	PACK QTY
654.0032	190x140, 240x190, 300x220, 380x300	25



Hinges Kit

PART NUMBER	DESCRIPTION	PACK QTY
654.0085	HINGES KIT (3 PIECES)	1/20



Wall Mounting Bracket Kit

PART NUMBER	DESCRIPTION	COLOUR	PACK QTY
654.0021	K1 - Wall mounting brackets kit (4 pieces)	GREY	10
654.0023	K2 - Wall mounting brackets kit (4 pieces)	GREY	10/100



Info
Technical
Infomation

03

64	Classifcation Code (acc. to EN 61386.24)
66	Classifcation Code (acc. to EN 61386.01)
67	Chemical Resistance
68	Corrugated Conduit Comparison Guide
70	Support
71	Contact Us

Classification Code for Conduit Systems

According to EN 61386-01

The classification code is made of 12 digits, according to EN 61386.01, and determines conduits main properties. The first 5 digits are displayed at marking and classify conduits according to their compression resistance, impact resistance, minimum and maximum operating temperature and bending resistance. Classification code is demonstrated in the table below.

Product example:
HPFLEX® 80mm

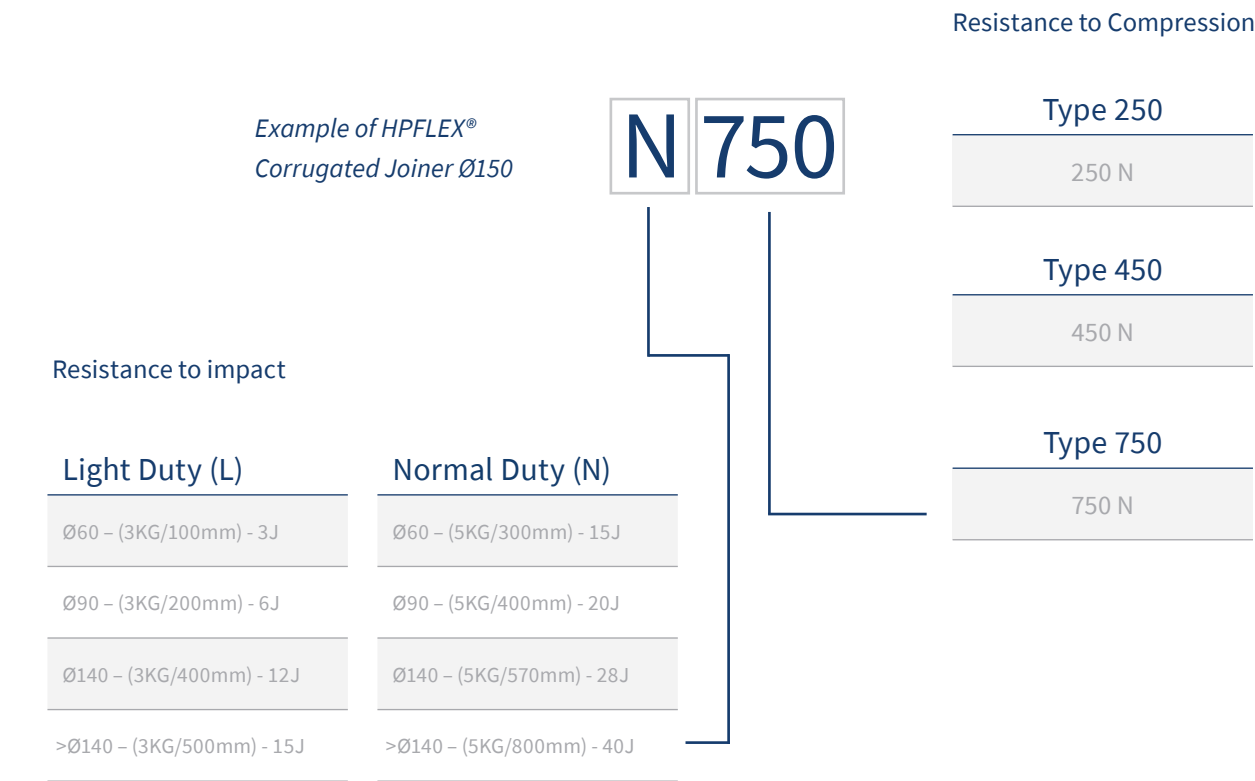
Digits	Class	0	1	2
1	Resistance to Compression	None Declared	Very light (125Nt)	Light (320Nt)
2	Resistance to Impact	None Declared	Very light (0.5 kg/100 mm - 0.5J)	Light (1.0 kg/100 mm - 1J)
3	Lower Temperature Range	None Declared	+5°C	-5°C
4	Upper Temperature Range	None Declared	+60°C	+90°C
5	Resistance to Bending		Rigid	Pliable
6	Electrical Characteristics	None Declared	With electrical continuity characteristics	with electrical insulating characteristics
7	Protection Against Ingress of Solid Objects	None Declared		
8	Protection Against Ingress of Water	None Declared	Vertically falling water drops	Direct sprays of water up to 15° from vertical
9	Resistance Against Corrosion	None Declared	Low protection inside and outside	Medium protection inside and outside
10	Tensile Strength	None Declared	Very light	Light
11	Resistance to Flame Propagation	None Declared	Non-flame propagating	Flame propagating
12	Suspended Load Capacity	None Declared	Very Light	Light

3	4	5	6	7	
Medium (750Nt)	Heavy (1250Nt)	Very heavy (4000Nt)			4
Medium (2.0 kg/100 mm - 2J)	Heavy (2.0 kg/300 mm - 6J)	Very heavy (6.8 kg/300 mm - 20.4J)			4
-15°C	-25°C	-45°C			2
+105°C	+120°C	+150°C	+250°C	+400°C	1
Pliable/Self Recovering	Flexible				2
with electrical continuity and insulating characteristics					2
Solid foreign objects over 2.5mm (e.g. tools, cables)	Solid foreign objetcs over 1mm (e.g. thin tools, small wires)	Dust (permeable only to visible particles)	Dust - tight		
Direct sprays of water up to 60° from vertical	Water splashing from all directions	Low pressure jets of water from all directions	Powerful pressure jets of water from all directions	Immersion in water between 15cm and 1m	
Medium protection inside and outside	Medium protection inside, high protection outside	High protection inside and outside			
Medium	Heavy	Very Heavy			
Medium	Heavy				

Classification Code for Underground Conduit Systems

According to EN 61386-24

The classification code for buried undercound conduits is made of 2 elements in accordance with EN61386-24 and determines the conduit's made properties. The first element is the letter "L" or "N" which classifies the conduit according to its impact resistance whereas the following number, 250, 450 or 750 classifies its compression resistance. See table below.



HPFLEX® Corrugated Joiner Ø100 & Ø150






Chemical Resistance

Table below is an infomational guide only of general chemical characteristics of our raw materials. This infomation should not be considered as a substitute for testing under your specific application conditions.

	HPFLEX®		PEFLEX®		PPFLEX®	
Material	uPVC		HDPE		PP	
Application Temperature	25 °C	60 °C	25 °C	60 °C	25 °C	60 °C
Acetaldehyde	—	—	•	L	•	—
Acetic Acid	•	•	•	•	•	•
Acetone	—	—	•	•	•	•
Acetyl Chloride	—	—	—	—	—	—
Ammonium Chloride	•	•	•	•	•	•
Ammonium Hydroxide	•	•	•	•	•	•
Aniline	—	—	•	•	•	•
Benzene	—	—	•	•	•	L
Benzoic Acid	•	•	•	•	•	•
Boric Acid (10%)	•	•	•	•	•	•
Bromine Gas	L	L	L	—	—	—
Bromine Water	•	L	L	—	—	—
Butyl Alcohol	•	•	•	•	•	•
Calcium Hydroxide	•	•	•	•	N/A	•
Carbon Disulphide	—	—	—	—	—	—
Carbon Tetrachloride	L	—	L	L	L	—
Chlorine Water	•	L	—	—	L	L
Chlorinated Gas	—	—	L	—	—	—
Citric Acid	•	•	•	•	•	•
Cyclohexanol	•	—	•	•	L	—
Diethylene Glycol	L	—	•	•	•	•
Diethyl Ether	L	N/A	L	—	•	—
Dioxin	—	—	•	•	•	L
Diesel Oil	•	•	•	N/A	•	•
Ethylene Chloride	—	—	—	—	L	—
Ethylene Oxide Gas	—	—	L	L	L	L
Fluorine Gas	—	—	—	—	—	—
Formic Acid	•	L	•	•	•	•
Glycerin	•	•	•	•	•	•
Hydrochloric Acid (30%)	•	•	•	•	•	•
Hydrofluoric Acid (25%)	•	•	•	•	•	•
Hydrogen	•	•	•	•	•	•
Hexane	•	—	•	—	•	L
Methyl Alcohol	•	L	•	•	•	•
Mineral Oil	•	•	•	•	•	L
Nitric Acid (<25%)	•	•	•	•	•	•
Oxalic Acid	•	•	•	•	•	L
Petroleum	•	L	•	•	•	L
Phosphoric Acid (50%)	•	•	•	•	•	•
Seawater	•	•	•	•	•	•
Sodium Chloride	•	•	•	•	•	•
Sulfuric Acid (<10%)	•	•	•	•	•	•
Sulfuric Acid (<90%)	—	—	L	L	L	L
Toluene	—	L	L	—	L	—
Vegetable Oil	•	•	•	L	•	•
Xylene	—	—	L	L	L	L

R = RESISTANT
L = LIMITED RESISTANCE
— = POOR RESISTANCE
N/A = No data available

Electrical Corrugated Conduit Comparison Guide

			
	HPFLEX® Medium Duty	HPFLEX® Heavy Duty	HPFLEX® Solar HDT
PROPERTIES			
Material	uPVC	uPVC	uPVC
Halogen Free	-	-	-
Flammability UL94	V0	V0	V0
Colour	Grey	Orange, Grey, White	Grey or Black
B.E.P Certified	Yes	Yes	Yes
SPECIFICATIONS			
Compression Strength	750 N	1250 N	1250 N
Impact Resistance	2J	6 J	6J
UV Resistance	Extreme UV (T)	Extreme UV (T)	Extreme UV (T)
Minimum Temperature	-5°C	-5°C	-5°C
Maximum Temperature	+ 60°C	+ 60°C	+ 60°C
Resistance to Bending	Pliable	Pliable	Pliable
AVAILABLE DIAMETERS			
Ø20	•	•	•
Ø25	•	•	•
Ø32	•	•	•
Ø40	•	•	•
Ø50	•	•	•
Ø63	•	•	•
Ø80 ¹	-	•	-
Ø100 ¹	-	_2	-
Ø150 ¹	-	_2	-
INSTALLATIONS ⁶			
Buried Underground	×	✓	×
Industrial Buildings	✓	✓	✓
Public Buildings	✓	✓	✓
Solar P.V Installations	×	×	✓
Infrastructure Projects	✓	✓	✓

✓ = Recommended

×






= Not recommended

• = Available

-

= Unavailable

The product infomation comparison guide is subject to change. We reserve the right to change material specifications without notice. Specifications listed are not limited and may extend past the scope of this document. Dimensions given are approximate as shrinkage can occur after production. As always, alternative dimensions and material specifications are available on request.

				
HPFLEX® Communications	HPFLEX® Corrugated Joiner	PEFLEX®	PPFLEX®	NYLOFLEX®
uPVC	uPVC	HDPE	PP	Nylon
-	-	Yes	Yes	Yes
V0	V0	HB on Request	V2 on Request	V0
White	Orange or White	Black	Black	Black
Yes	Yes	-	-	-
750 N	2100 N	450 N to 1250 on Request ⁷	450 N to 1250 on Request ⁷	450 N ⁷
2J	28J & 40J	2J ⁷	2J ⁷	2J ⁷
Extreme UV (T)	Extreme UV (T)	2% Carbon Black	2% Carbon Black	UV Stabilised
-5°C	-5°C	-50°C	-10°C	-20°C
+ 60°C	+ 60°C	+ 70°C	+ 65°C	+ 100°C
Pliable	Pliable	Flexible	Flexible	Flexible
•	-	-	-	-
•	-	•5	•5	•8
•	-	•5	•5	•8
-	-	•5	•5	•8
•	-	•5	•5	-
-	-	•5	•5	-
•3	-	•5	•5	-
_4	•	-	-	-
_4	•	-	-	-
×	✓	×	×	×
✓	✓	✓	✓	✓
✓	✓	✓	✓	✓
×	×	×	✓	×
✓	✓	✓	✓	✓

1. Nominal diameter for 80mm, 100mm & 150mm is measured from inner diameter (I.D) as per IEC 61386.22
2. 100mm & 150mm heavy-duty is available as our 'Corrugated Joiner'.
3. 80mm communications white is available as heavy-duty corrugated conduit.
4. 100mm & 150mm communications white is available as our 'Corrugated Joiner'
5. Made to order dimension.
6. The installation table is merely a guide, his infomation should not be considered as a substitute for relavant electrical installation standards and regulations.
7. Not applicable to split corrugated conduit.
8. NYLOFLEX® Nominal diameters differ from other product ranges. Refer to page 27 for accurate dimensions.

Support

Install with Confidence

HP profiles has always been committed to providing quality products, superior service and accessible support to all our customers

In 2019 we introduced a 25-year limited warranty on our HPFLEX Electrical Corrugated Conduit. This warranty along with our solid reputation in the electrical industry allows the end-user to install our products with complete confidence

With local representatives in Sydney, Melbourne, Brisbane and Perth, we provide exceptional service nationwide.



Documentation

Learn more about the properties of our conduit and cable protection systems through our online website www.hpprofiles.com



Technical Support

You can contact HP Profiles' Technical Support department at support@hpprofiles.com for all questions concerning polymer properties, material specifications and product advice.



Website

The entire catalogue and additional information on our products is available on our website, www.hpprofiles.com



Local Support

Offices nationwide allow us to provide local support with a strong sales representative network in Victoria, New South Wales, Brisbane and Perth.

Contact us

Melbourne

21 Crompton Way,
Dandenong South,
Victoria, 3175

T. +61 (03) 9792 9740

Perth

38 Enterprise Crescent,
Malaga,
Western Australia, 6090

T. +61 (08) 9248 4445

Brisbane

Unit 2, 31 Industry Place,
Wynnum,
Queensland, 4178

T. +61 (07) 3170 1399



HPPROFILES has always been committed to providing correct and reliable information to engineers/electricians. This catalogue is a useful guide to our cable protection systems for electrical installation. The information provided in this document does not in any case constitute nor substitute the industry standards or any other documents to which it refers. It is understood that the user must always check if the products and installation procedures are fit for purpose and compliant to relevant standards in their local state or territory.

MELBOURNE

21 Crompton Way
Dandenong South
VIC 3175

T. +61 (03) 9792 9740

PERTH

38 Enterprise Crescent
Malaga
WA 6090

T. +61 (08) 9248 4445

BRISBANE

Unit 2, 31 Industry Place
Wynnum
QLD 4178

T. +61 (07) 3170 1399

www.hpprofiles.com
sales@hpprofiles.com

